

COMMUNITY SPOTLIGHT

CHP PARTICIPANT COMMUNITY PROVIDENCE CENTER FOR OUTCOMES RESEARCH AND EDUCATION (CORE) AND HEALTHY LIVING COLLABORATIVE Southwest Washington



“If health is driven by an array of social, structural, and environmental factors, then data systems for population health management must take social, structural and environmental indicators into account.”

PROJECT SNAPSHOT

Site Type	Not-for-Profit (Societies, Assc., Educ., Research)
Project Focus	Other Chronic Conditions, Well-being Health
Health Objective	Identify at-risk populations; mobilize resources to improve their health and well-being
Anticipated Products	Set of outcomes measures
Sectors	Lead: Academia/Research Partners: Public Safety/Law Enforcement, Education/Schools, Housing/Homelessness, Other Community-based Data contribution: Public Safety / Law Enforcement, Education / Schools, Housing / Homelessness, Criminal Justice, Public Health
Data Types	Administrative: schools, corrections, housing; Geographic; Personal Demographic; Service (EHRs, case management); Surveillance
Target Population	Other vulnerable populations
Impact Level	Community

COMMUNITY OVERVIEW

The Providence Center for Outcomes Research and Education is a not-for-profit health policy research center committed to improving community health. Their Community Health Peer Learning (CHP) Program project will be in partnership with the Healthy Living Collaborative of Southwest Washington State, a coalition of diverse sectors including academia, health care, criminal justice, housing, education, and public health. With the support of the CHP Program, a multi-sector team will share data and co-design an analysis of that data to inform community-based population health strategy.

PROJECT APPROACH

Our proposed Apex Population Project has the following specific aims:

- **AIM 1:** Conduct a multi-sector data analysis that brings together data on health care encounters, housing assistance, school attendance, and corrections to identify at-risk populations (co-creating criteria for identifying these populations) from within and across the sectors – our apex population.
- **AIM 2:** Convene a multi-sector Learning and Action Team to draft a Community Action Plan: a regional strategy for improving outcomes among the apex population.
- **AIM 3:** Develop and track key outcomes measures from the multi-sector data that could measure progress over time and inform process improvement activities

ANTICIPATED IMPACT

By collaborating to learn more about and to serve our community's apex population - those who are chronically ill, chronically homeless, chronically incarcerated, and whose children are chronically absent from school - more effectively and more efficiently, we can position the community to improve outcomes and capture savings across health care, housing, corrections, and education budgets.

PROJECT TIMELINE

MONTHS 1-6	MONTHS 7-12	MONTHS 13-17
<ul style="list-style-type: none"> • Convene Learning and Action Team; collectively solidify aims and strategies • Convene Learning and Action Team; identify sector partners for data sharing agreements • Create data sharing agreements and other mechanisms needed to support the work • Participate in CHP Program learning opportunities • Design analytics infrastructure (data feeds, data fields, analytic components) • Receive first data extracts to begin analysis 	<ul style="list-style-type: none"> • Convene Learning and Action Team; Learning and Action Team determines identification criteria for apex population • Implement at-risk population flags • Learning and Action Team specifies key success metrics (target outcomes for apex population) • Participate in CHP Program learning opportunities 	<ul style="list-style-type: none"> • Create analytic data sets • Answer prioritized questions to support intervention planning and design • Track success metrics with periodic dashboard reports • Participate in CHP Program learning opportunities • Develop report to share with Community Health Peer Learning Program

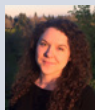
LEAD AGENCY

- **Providence Center for Outcomes Research and Education (CORE)** (<http://oregon.providence.org/our-services/c/center-for-outcomes-research-and-education-core/>) is a health policy research shop that engages in program evaluation and research with the aim of improving health outcomes for the most vulnerable in our community. CORE team members conducted the 17 data-sharing site visits with region partners on behalf of the Healthy Living Collaborative of Southwest Washington (HLC), giving CORE the opportunity to connect with the key partners necessary to implement the Apex Population Project. CORE's familiarity with the data architecture and specifications of the key data sources—as well as their familiarity with the community in SW Washington—will enhance their ability to meet the project's specific aims.

PARTNERS/COLLABORATORS

- **Healthy Living Collaborative of Southwest Washington (HLC):** Committed to addressing the social determinants of health, the HLC has engaged sectors that are not always associated with a traditional view of health protection and promotion. Managed by a Policy and Steering Committee from Clark, Cowlitz, Skamania, and Wahkiakum Counties, the 50-member Collaborative has diverse representatives from sectors that include public health, social and human services, K-12 education and early learning, higher education, faith communities, public housing, homelessness, clinical services, behavioral health, business, the environment and transportation.

MEET THE PROJECT TEAM!



Nicole Olson, M.A.

Title: Associate Director, Providence CORE
 CHP Role: Principal Investigator
 Contact: nicole.a.olson@providence.org

Ask her about:

- Health care transformation
- Data and measurement
- Large-scale community data projects (with program evaluation components)



Kachina Inman

Title: Executive Director, Healthy Living Collaborative
 CHP Role: Project Sponsor (In-Kind)
 Contact: kachina@hlcsww.org

Ask her about:

- The SW Community
- Community-based engagement and prevention
- Infrastructure for collective impact (building partnerships across sectors)
- Community health workers
- Health policy