

ANNUAL RESEARCH MEETING

AGENDA AT A GLANCE SUPPORTERS EXHIBITORS ADVERTISEMENTS



ANNUAL RESEARCH MEETING

AGENDA AT A GLANCE

Time	Location	Title	Chair(s)	Theme	Session Type
Friday, June 3					
3:00 p.m. – 6:00 p.m.	WCC Exhibit Hall E	Registration Open			
Saturday, June 4					
7:00 a.m. – 6:00 p.m.	WCC Exhibit Hall E	Registration Open			
8:00 a.m. – 12:00 p.m.	WCC Rm 144 A/B	Interdisciplinary Research Group on Nursing Issues (IRGNI) Pre-Conference			
8:30 a.m. – 12:00 p.m.	Marriott Independence Salon D	Identifying Practical Barriers and Solutions to Data Collection and Reporting in the Age of COVID-19			
12:30 p.m. – 2:00 p.m.	Marriott Independence Salons A/B/C	Examining Prescribing Behavior and the Impact on Population Health	Merianne Spencer	PPH	CFA
	Marriott Independence Salon E	Innovation in Mental Health Service Delivery to Improve Quality and Outcomes	Jangho Yoon	MHSU	CFA
	Marriott Independence Salons F/G/H	Healthcare Delivery for Youth in Foster Care: Partnerships to Improve Health Outcomes	Sarah Beal	CFH / HCHN	RP
	Marriott Liberty Salon L	Implementing Patient-Centered Research in Healthcare Systems	Yewande Oladeinde	PCR	CFA
	Marriott Liberty Salon M	Advancing Reproductive and Maternal Health Care in Medicaid Populations	Jacqueline Ellison	WH	CFA
	Marriott Liberty Salons N/O/P	COVID-Era Policy Impacts on Insurance Coverage and Access to Care	Lindsay Sabik	MCA	CFA
	WCC Rm 140 A/B	Access to Pharmaceutical Products and COVID Vaccines	Chinenye Anyanwu	SRDE	CFA
	WCC Rm 145 A/B	Enhancing Accessibility of Federal and Community Level Social Determinants of Health Data	Rachael Zuckerman	DTDA / SDSN	PCEI
	WCC Rm 146 A	High-Value Health Care Innovations	Mona Al-Amin	ISQV	CFA
	WCC Rm 146 B	Late-Breaking Session: Data Blitz	Jaya Tripathi		LBA
	WCC Rm 146 C	Patient Values and Preferences and Inequities in Care Delivery	Anna Sinaiko	APCP	CFA
	WCC Rm 147 A	Access and Quality Inequities Experienced by Minoritized Populations	Odichinma Akosionu	ADE	CFA
	WCC Rm 147 B	Best of IRGNI 2022 Call for Abstracts	Hayley Germack		IG
	WCC Rm 150 A/B	Health Equity Tourism: A Barrier to Health Justice	Elle Lett		CDW



AcademyHealth

ANNUAL RESEARCH MEETING

AGENDA AT A GLANCE

Time	Location	Title	Chair(s)	Theme	Session Type
12:30 p.m. – 4:00 p.m.	WCC Level 2 Foyer	Chat Corner Open			
	WCC Concourse Foyer	Networking Pod: Improving Overall Health			
	Marriott Meeting Room Level 4	Networking Pods: - Focus on the System - Building Your Career - Focus on Population Subgroups - Focus on Care Delivery			
2:00 p.m. – 2:30 p.m.		Break			
2:30 p.m. – 4:00 p.m.	Marriott Independence Salon D	Health Economics IG: Research from Emerging Health Economists	Kimberley Geissler		IG
	Marriott Independence Salon E	Addressing Disparities for Vulnerable Populations	Noah Triplett	DII	CFA
	Marriott Independence Salons F/G/H	Medical Service Use by Older Adults	Sara Galantowicz	ADE	CFA
	Marriott Liberty Salons I/J/K	Organizational and Structural Factors that Influence Quality, Price, and Outcomes	Rachel Reid	MSQV	CFA
	Marriott Liberty Salon L	A Rubric for Algorithmic Fairness for Predictive Analytics in Healthcare	Keren Ladin	SRDE / DTDA	PCEI
	Marriott Liberty Salon M	Impact of CMS-Led Payment Models	Justin Timbie	PDSI	CFA
	Marriott Liberty Salons N/O/P	Medicaid Eligibility and Coverage for Pediatric and Perinatal Populations	Anushree Vichare	MCA	CFA
	WCC Rm 140 A/B	COVID-19, Social Risks and Health	Sam Savitz	SDSN	CFA
	WCC Rm 145 A/B	Workforce Turnover: What Do We Know from the Physicians, Nurse Practitioners and Home Nurses Workforce	Ksenia Gorbenko	HW	CFA
	WCC Rm 146 A	Culturally Responsive Research Methods	Jameta Barlow		MS
	WCC Rm 146 B	Patients as Partners in Research	Susan Perez	PCR	CFA
	WCC Rm 146 C	Through and Equity Lens: Best Practices in Mentoring	Margo Edmunds		CDW
	WCC Rm 147 A	Opioid-Related Policy Changes and Their Impacts	Ali Jalali	MHSU	CFA
	WCC Rm 150 A/B	VA's Community Care Program: A Learning Health System in Action	Michelle Mengeling		SS
4:00 p.m. – 4:30 p.m.		Break			
4:30 p.m. – 6:00 p.m.	Marriott Marquis Ballroom	Opening Plenary and Awards Presentation	Lisa Simpson / Tracy Lieu / Chima Ndumele / Alyce Adams		



AcademyHealth

ANNUAL RESEARCH MEETING

AGENDA AT A GLANCE

Time	Location	Title	Chair(s)	Theme	Session Type
Sunday, June 5					
7:00 a.m. – 8:00 a.m.	Marriott Meeting Room Level 4 Foyer	Continental Breakfast			
	Marriott University of DC/ Catholic University	Meet the Experts Student Breakfast			
7:00 a.m. – 5:00 p.m.	WCC Exhibit Hall E	Registration Open			
8:00 a.m. – 9:30 a.m.	Marriott Independence Salons A/B/C	Surgical and Perioperative Care: Drivers, Outcomes, and Value	Jennifer Cooper		IG
	Marriott Independence Salon D	Women and Gender Health: Reconnecting and Rebuilding	Karissa Fenwick / Aimee Kroll-Desrosiers		IG
	Marriott Independence Salon E	Accelerating State Adoption of the Opioid Use Disorder Care Cascade through Standard Metrics	France McGaffey	MHSU / PPH	PR
	Marriott Independence Salons F/G/H	Patient Engagement and Access to High-Quality Care	Jessica Mittler	APCP	CFA
	Marriott Liberty Salons I/J/K	Lessons from Users of Health Digital Technologies, User Experience	Prashila Dullabh	DTDA	CFA
	Marriott Liberty Salon L	Quality Measurement and Analysis	Gareth Parry	ISQV	CFA
	Marriott Liberty Salons N/O/P	Using Encounter Data for Research on Medicare Advantage	Daniel Polsky	MED / MR	RP
	WCC Rm 140 A/B	Addressing Systemic Racism across Long-Term Services and Supports to Advance Health Equity	Shekinah Fashaw-Walters	ADE / SRDE	PCEI
	WCC Rm 145 A/B	Adjusting for the Influence of COVID-19 in CMMI Model Evaluations	Noemi Rudolph		SS
	WCC Rm 146 A	Can We Talk About Money?: Health Services Research and Health Economics	Robert Valdez		SS
	WCC Rm 146 B	Geospatial Contributors to Poor Health and Health Inequity	Joel Adler	SDSN	CFA
	WCC Rm 146 C	Health Workforce Diversity and Equality Issues: Unequal Stress and Unmet Needs	Ryan Kandrack	HW	CFA
	WCC Rm 147 A	Child Health: Preventative Care and COVID-19	Dushka Crane	CFH	CFA
	WCC Rm 147 B	Late-Breaking Session: COVID-19	Gilbert Gonzales		LBA
	WCC Rm 150 A/B	Good Faith Estimates for Health Care Prices Require a Leap of Faith	Aneesh Chopra	MSQV	PCEI



AcademyHealth

ANNUAL RESEARCH MEETING

AGENDA AT A GLANCE

Time	Location	Title	Chair(s)	Theme	Session Type
8:00 a.m. – 5:00 p.m.	WCC Level 2 Foyer	Chat Corner Open			
	WCC Concourse Foyer	Networking Pod: - Improving Overall Health			
	Marriott Meeting Room Level 4	Networking Pods: - Focus on the System - Building Your Career - Focus on Population Subgroups - Focus on Care Delivery			
9:30 a.m. – 4:00 p.m.	WCC Exhibit Hall E	Exhibit Hall Open			
10:00 a.m. – 11:30 a.m.	Marriott Independence Salons A/B/C	Innovations in Evaluation Methods and Healthcare Utilization Measurement	Matt Trombley	MR	CFA
	Marriott Independence Salon D	Inequities in Perinatal Health and Health Care	Catherine Chanfreau	WH	CFA
	Marriott Independence Salon E	Impact of Benefit Design and Payment Models on Mental Health Care	Morgan Shields	MHSU	CFA
	Marriott Independence Salons F/G/H	Economics of Health Service Delivery	Peter Cram / Bruce Landon	GHPR	CFA
	Marriott Liberty Salon L	Strategies for Appropriate Opioid Prescribing	Sarah Shoemaker-Hunt	ISQV	CFA
	Marriott Liberty Salons N/O/P	Learning Health Systems: Conducting Embedded Research in a Health System; Challenges Encountered & Strategies Used	Lucy Savitz		IG
	WCC Rm 140 A/B	Child Health Services Research: Kids Are Our Future and Our Present: Putting Children Back on the Policy Agenda	Gregory Stevens		IG
	WCC Rm 145 A/B	Making Data Actionable: Dashboards to Address Social Determinants of Health in Care	Arlene Bierman	PPH / SDSN	PR
	WCC Rm 146 A	A Deeper Dive into Vertical Integration	Jeff Stensland	PDSI	
	WCC Rm 146 B	COVID-19 Pandemic: Care and Outcomes for Older Adults and Their Caregivers	Julia Burgdorf	ADE	CFA
	WCC Rm 146 C	Medicaid's Role in Improving Access and Quality for Underserved Populations	Andrew Loehrner	MCA	CFA
	WCC Rm 147 A	Best Student Poster Symposium	Melinda Buntin / Jeanne-Marie Guise		
	WCC Rm 147 B	Innovative Care Models Targeting High-Risk Populations	Molly Jeffery	HCHN	CFA
	WCC Rm 150 A/B	Structural Drivers of Poor Care: Lessons from the COVID Experience	Candance Hall	SRDE	CFA
11:30 a.m. – 12:30 p.m.		Lunch on Your Own			



AcademyHealth

ANNUAL RESEARCH MEETING

AGENDA AT A GLANCE

Time	Location	Title	Chair(s)	Theme	Session Type
11:45 a.m. – 12:15 p.m.	WCC Exhibit Hall E	Continue the Conversation: “Higher Ground: Moving Beyond Career Pathways to Fund and Sustain a Diverse and Inclusive Workforce”			
12:30 p.m. – 2:00 p.m.	Marriott Independence Salons A/B/C	Disparities IG: The Value of Community Engagement for Health Equity in Health Services Research and Practice	Yasmeen Long		IG
	Marriott Independence Salon D	Evaluation of Value-Based Care Models for High-Need, Vulnerable Populations	Jose Figueroa	HCHN	CFA
	Marriott Independence Salon E	Caring for the Maternal-Child Dyad Locally and Nationally	Sara Handley	CFH	CFA
	Marriott Independence Salons F/G/H	Nasem Recommendations to Improve Nursing Home Quality: A Discussion of the 2022 Report	Vincent Mor	ISQV / ADE	PR
	Marriott Liberty Salons I/J/K	Hospitals and Health Systems and the Impact of COVID-19	Valerie Yeager	PPH	CFA
	Marriott Liberty Salon L	Digital Technologies and Prediction Analytics: Impacts on Patient Outcomes	Timothy Coffin	DTDA	CFA
	Marriott Liberty Salon M	Quality and Value: Quality Disparities Exposed through AHRQ Data During the Pandemic	Mary Mulrooney / Feng Qian		IG
	WCC Rm 140 A/B	Predictive Analytics and Machine Learning	Neil Fleming		MS
	WCC Rm 145 A/B	Health Workers Safety, Burnout, and Wellbeing	Eric Apaydin	HW	CFA
	WCC Rm 146 A	Measuring Impact of Policy Strategies	Claire Brindis		MS
	WCC Rm 146 B	Private Insurance Market Dynamics and Benefit Design in the Post-ACA Era	Michal Horný	MCA	CFA
	WCC Rm 146 C	Early and Consistent Exposure to Structural Threats to Health Over the Life Course	Kathryn Thompson	SRDE	CFA
	WCC Rm 147 A	Advancing Dissemination and Implementation in Clinical Settings	Aizhan Karabuka-yeva	DII	CFA
	WCC Rm 147 B	Housing Insecurity and Health: What Can Policy and Health Systems Do?	Kalyani Gopalan	SDSN	CFA
	WCC Rm 150 A/B	Telemedicine as Standard of Care: Strategies for Expanding Benefits and Addressing Unintended Consequences in the Post-COVID Period	Julia Adler-Milstein		SS
2:15 p.m. – 3:15 p.m.	WCC Exhibit Hall E	Poster Session A			



AcademyHealth

ANNUAL RESEARCH MEETING

AGENDA AT A GLANCE

Time	Location	Title	Chair(s)	Theme	Session Type
3:30 p.m. – 5:00 p.m.	Marriott Independence Salons A/B/C	Data Sharing, Integration, Interoperability, and Standardization	Anupa Bir		MS
	Marriott Independence Salon D	Public Health Services and Systems Research: Spotlight on Emerging Research	Anushree Vichare		IG
	Marriott Independence Salon E	Preventing Domestic Violence: Addressing the Root Causes Through Systems Change	Debbie Chang		SS
	Marriott Independence Salons F/G/H	Health Care Use and Patient Experiences at the End of Life	Emmanuelle Belanger	ADE	CFA
	Marriott Liberty Salons I/J/K	Late-Breaking Session: Inequalities in Care for the Underserved	Rosalind Raine		LBA
	Marriott Liberty Salon L	Improving Value Through Health Care Delivery	Deepshikha Ashana	ISQV	CFA
	Marriott Liberty Salon M	AHRQ Data Innovations	Herbert Wong		SS
	Marriott Liberty Salons N/O/P	Preparing the Workforce to Serve People with Intellectual or Development Disabilities	Hoangmai Pham	HW	PR
	WCC Rm 140 A/B	New Weighting Methods			MS
	WCC Rm 145 A/B	Structural Racism and Disparities in Medications for Opioid Use Disorder	Michael Flores	MHSU	CFA
	WCC Rm 146 B	Organizational Response to Challenge and Change: Impact on Cost, Competition, and Access	Caroline Logan	OBM	CFA
	WCC Rm 146 C	Socially Vulnerable Patient Populations and Health Disparities	Kenton Johnson	MED	CFA
	WCC Rm 147 A	Implications of Medicaid Managed Care for Access, Quality, and Disparities	William Schpero	MCA	CFA
	WCC Rm 147 B	Identity, Social Needs and Responsive Interventions for Patients and Clinicians	Alane Celeste-Vilalvir	SRDE	CFA
	WCC Rm 150 A/B	Forging Your Own Path: Identifying Funding Opportunities for Early Career Researchers	Michelle Keller		CDW



AcademyHealth

ANNUAL RESEARCH MEETING

AGENDA AT A GLANCE

Time	Location	Title	Chair(s)	Theme	Session Type
Monday, June 6					
7:00 a.m. – 8:00 a.m.	Marriott Meeting Room Level 4 Foyer	Continental Breakfast			
7:00 a.m. – 5:00 p.m.	WCC Exhibit Hall E	Registration Open			
7:15 a.m. – 7:45 a.m.	Marriott Mint	Coffee Chat: Partnering with States for HSR	Andrew Barnes / Kosali Simon		
8:00 a.m. – 9:00 a.m.	WCC Exhibit Hall E	Poster Session B			
8:00 a.m. – 4:00 p.m.	WCC Exhibit Hall E	Exhibit Hall Open			
8:00 a.m. – 5:45 p.m.	WCC Level 2 Foyer	Chat Corner Open			
	WCC Concourse Foyer	Networking Pod: - Improving Overall Health			
	Marriott Meeting Room Level 4	Networking Pods: - Focus on the System - Building Your Career - Focus on Population Subgroups - Focus on Care Delivery			
9:15 a.m. – 10:45 a.m.	Marriott Independence Salons A/B/C	Global Health and Health Care Interest Group	Corrina Moucheraud / Peter Cram		IG
	Marriott Independence Salon D	The Centers for Medicare & Medicaid Services Data and Information Products	Katie Hitchcock		RR
	Marriott Independence Salon E	Long-Term Services and Supports: The Future of Caregiving	Megan Shepherd-Banigan		IG
	Marriott Independence Salons F/G/H	Supporting Families Through Crisis	Lucy Bilaver	CFH	CFA
	Marriott Liberty Salons I/J/K	Surgical Quality	Mike Thompson	ISQV	CFA
	Marriott Liberty Salon L	Dissemination and Implementation in COVID Context	Anne Sales	DII	CFA
	Marriott Liberty Salon M	From Data to Evidence: Modernizing NCHS Data for Better User Experience and Decision-making	Renee Gindi		RR
	Marriott Liberty Salons N/O/P	What Happens Within Teams of Health Care Workers? Team Dynamics and Team Functioning	Ellen Childs	OBM	CFA
	WCC Rm 140 A/B	Driving Down Drug Overdoses: A Harm Reduction Approach	Rachel Pryor	MHSU	PR
	WCC Rm 145 A/B	Measuring Structural Racism in Health Care and Public Health	Morenike Ayo-Vaughan		MS
	WCC Rm 146 A	Working at the Intersection of Entrepreneurship, Technology, and Health Equity	Thomas Burroughs		CDW



AcademyHealth

ANNUAL RESEARCH MEETING

AGENDA AT A GLANCE

Time	Location	Title	Chair(s)	Theme	Session Type
	WCC Rm 146 B	State All Payer Claims Databases: Current Status and Future Promise	Nancy De Lew	DTDA	PR
	WCC Rm 146 C	Understanding How Social Risk Factors Affect Health Care Utilization and Quality	Andrew Boozary	MSQV	CFA
	WCC Rm 147 A	Improving Obstetrical and Perinatal Care and Outcomes	Michelle Moniz	WH	CFA
	WCC Rm 147 B	Impact of VBP on Equity and Vulnerable Populations	Robert Saunders	PDSI	CFA
	WCC Rm 150 A/B	Presidential Session: Rock Stars of HSR	Lisa Simpson		SS
10:45 a.m. – 11:15 a.m.		Break			
10:45 a.m. – 11:45 a.m.	WCC Exhibit Hall E AcademyHealth Booth	Tweetup			
11:15 a.m. – 12:45 p.m.	Marriott Independence Salon D	Advances in Implementation Science to Better Meet the Needs of Stakeholders	Sam Savitz		MS
	Marriott Independence Salon E	Best of ARM Session: Successes and Setbacks in Pursuit of High-Quality, Safe, and Affordable Care	Jeffrey Kullgren		BOA
	Marriott Independence Salons F/G/H	Impact of COVID-19 on Mental Health Care and Equity	Matthew Wanat	MHSU	CFA
	Marriott Liberty Salons I/J/K	Innovations in Training the Next Generation of Health Services Researchers	Francis Chesley		SS
	Marriott Liberty Salon L	Organizational Consolidation, Concentration, Integration: Impact on Patient Outcomes	Mehmet Sari	OBM	CFA
	Marriott Liberty Salon M	Current Policy Issues in Prescription Drug Pricing: How Do We Improve Patient Access and Reduce Spending?	Kelly Anderson	APCP / MCA	RP
	Marriott Liberty Salons N/O/P	Gender Wage Disparities in the Health Workforce – Magnitudes, Trends, and Mechanisms	Xiaochu Hu	WH / HW	RP
	WCC Rm 140 A/B	Health IT: Where are We in Improving Person-Centered Care?	Sylvia Hobbs		IG
	WCC Rm 146 A	Public and Flourish: Meet the Editors	Kristin Rosengren		CDW
	WCC Rm 146 B	Understanding Disparities in Care Among High-Need, Vulnerable Populations	Utibe Essien	HCHN	CFA
	WCC Rm 146 C	Health Related Social Needs and Health Outcomes	Serena Rajabiun	SDSN	CFA
	WCC Rm 147 A	Evaluating Impacts of COVID-19 in US Populations – Challenges for Public Health	Lok Samson	PPH	PCEI
	WCC Rm 147 B	Racial Disparities in Emergency, Ambulatory, and Inpatient Care Outcomes	LaShaune Johnson	SRDE	CFA
	WCC Rm 150 A/B	COVID in the VA: Researching the Effects on Health & the Health System	Maciej Gonek		SS



AcademyHealth

ANNUAL RESEARCH MEETING

AGENDA AT A GLANCE

Time	Location	Title	Chair(s)	Theme	Session Type
12:45 p.m. – 1:45 p.m.		Lunch on Your Own			
1:00 p.m. – 1:30 p.m.	WCC Exhibit Hall E	Continue the Conversation: “Forging Your Own Path: Identifying Funding Opportunities for Early Career Researchers”			
1:45 p.m. – 2:45 p.m.	Marriott Marquis Ballroom	Plenary: Professional and Organizational Resilience: Thriving After Burnout	Eve Higginbotham		
3:00 p.m. – 4:00 p.m.	WCC Exhibit Hall E	Poster Session C			
4:00 p.m. – 4:15 p.m.		Break			
4:15 p.m. – 5:15 p.m.	WCC Rm 150 A/B	Reinhardt Lecture	Lisa Simpson		SS
4:15 p.m. – 5:45 p.m.	Marriott Independence Salons A/B/C	Career Opportunities and Pathways in Business, Non-Governmental Organizations (NGOs), and Government	Eduardo Sanchez		MS
	Marriott Independence Salon D	State Health Research and Policy: Reflections on Medicaid Research	Robert Nelb		IG
	Marriott Independence Salon E	Frameworks and Methods for Engaging Communities in Health Services Research	Lisa Goldman Rosas		MS
	Marriott Independence Salons F/G/H	Using the New National Research Agenda for Children and Youth with Special Healthcare Needs	Christopher Stille	CFH / HCHN	PCEI
	Marriott Liberty Salons I/J/K	New Methodological Approaches for Measuring and Estimating Health Care Quality and Inequities	Lihua Li	MR	CFA
	Marriott Liberty Salon L	The Impact of Costs and Prices of Prescription Drugs and Other Health Care Services	Aditi Sen	APCP	CFA
	Marriott Liberty Salon M	Late-Breaking Session: Considering Cost and Cost Burden	Michal Horný		LBA
	Marriott Liberty Salons N/O/P	Nurse and Home Care Workforce – Projection, Shortage, and Implications in COVID-19	Lorinda Coombs	HW	CFA
	WCC Rm 140 A/B	Diversity Science: Moving from Cosmetic Victories to Integrated Actions within a Learning Health System	Jennifer Ridgeway		SS
	WCC Rm 145 A/B	Bias in Studies Using Healthcare Data	Eberechukwu Onukwugha	MSQV	PCEI
	WCC Rm 146 A	Real-World Use and Data in EHR/HIE/Interoperability	Teresa Gibson	DTDA	CFA
	WCC Rm 146 B	The Impact Bundled Payment Models on Costs and Outcomes	Joshua Liao	MED	CFA
	WCC Rm 146 C	The Impact of Social Determinants of Health and Medicaid Populations	Samuel Opoku	SDSN	CFA
	WCC Rm 147 A	Improving Care Across the Continuum for Woman, Transgender and Gender Diverse Individuals	Camille Fabiyi	WH	CFA
	WCC Rm 147 B	Insights to Identify and Mitigate Risk through Public Health Practice	Julia Costich	PPH	CFA



AcademyHealth

ANNUAL RESEARCH MEETING

AGENDA AT A GLANCE

Time	Location	Title	Chair(s)	Theme	Session Type
Tuesday, June 7					
7:00 a.m. – 8:00 a.m.	Marriott Meeting Room Level 4 Foyer	Continental Breakfast			
7:00 a.m. – 12:00 p.m.	WCC L Street North Lobby	Registration Open			
8:00 a.m. – 9:30 a.m.	Marriott Independence Salons A/B/C	Best of ARM Session: The Impact of Payment Policies on Key Health Outcomes	Darshak Sanghavi		BOA
	Marriott Independence Salon D	Mental Health and Substance Use Research: Recent Developments			IG
	Marriott Independence Salons F/G/H	Impact of State-Led Regulations and Models	Anna Sommers	PDSI	CFA
	Marriott Liberty Salon L	Randomized Trials to Encourage Safe and High-Value Prescribing	Austin Frakt	ISQV	RP
	Marriott Liberty Salon M	What Kinds of Organizations Provide the Best Quality Health Care? Organizational Influences on Health Care Quality	Bettye Apenteng	OBM	CFA
	Marriott Liberty Salons N/O/P	Training and Enabling Health Workers to Meet Population Needs and Reduce Spending	Zeynal Karaca	HW	CFA
	WCC Rm 140 A/B	Health Information Exchange to Advance Public Health Reporting During the Pandemic and Beyond	Saira Haque	PPH / DTDA	RP
	WCC Rm 145 A/B	Leadership, Team Building, and Research Management Skills	Chris Harle		CDW
	WCC Rm 146 A	Late-Breaking Session: A Broad Set of Care Delivery Topics	David Meyers		LBA
	WCC Rm 146 B	Advancing Patient-Centeredness in Clinical Decision Support	Edwin Lomotan	DTDA / APCP	PCEI
	WCC Rm 146 C	Social Determinants of Health: What Do We Need to Know and How Do We Measure It?	Caroline Fichtenberg		SS
	WCC Rm 147 A	Resilience in Health Care Delivery	Troy Jacobs	GHPR	CFA
	WCC Rm 147 B	Implications of Payment Policies in Addressing Disparities	Melanie Wasserman	SRDE	CFA
	WCC Rm 150 A/B	How Implementation Science Can Move the Needle on Health System Quality	Lucy Savitz		SS
8:00 a.m. – 11:30 a.m.	WCC Level 2 Foyer	Chat Corner Open			
	WCC Concourse Foyer	Networking Pod: - Improving Overall Health			
	Marriott Meeting Room Level 4	Networking Pods: - Focus on the System - Building Your Career - Focus on Population Subgroups - Focus on Care Delivery			
9:30 a.m. – 10:00 a.m.		Break			



AcademyHealth

ANNUAL RESEARCH MEETING

AGENDA AT A GLANCE

Time	Location	Title	Chair(s)	Theme	Session Type
10:00 a.m. – 11:30 a.m.	Marriott Marquis Ballroom	20 th Anniversary of National Academies' Institute of Medicine 'Unequal Treatment Report'	Susan Dentzer		SS
	Marriott Independence Salon D	Using Causal Inference Models in Observational Study	Huiwen Xu		MS
	Marriott Independence Salons F/G/H	Improving Nursing Home Care	Patricia Rowan	ADE	CFA
	Marriott Liberty Salons I/J/K	Methodological Advances for Dissemination and Implementation	Kristian Stensland	DII	CFA
	Marriott Liberty Salon L	Telehealth Adoption and Impacts	Ching-Ching Claire Lin	DTDA	CFA
	Marriott Liberty Salon M	Financial Incentives and Alternative Payment Models	Karen Joynt Maddox	MED	CFA
	Marriott Liberty Salons N/O/P	Health Workforce IG: Cultivating Effective Research Partnerships	Janet Coffman		IG
	WCC Rm 140 A/B	Policy and Surveillance: Tools in Protecting the Public's Health	Dawn Heisey-Grove	PPH	CFA
	WCC Rm 145 A/B	Methodological Challenges Associated with Improving Health Equity in Medicaid	Kosali Simon	MR / MCA	RP
	WCC Rm 146 A	Innovations in Care for Opioid Use Disorder and Substance Use Disorders	Audrey Jones	MHSU	CFA
	WCC Rm 146 B	Safety, Quality, and Value of Health Care During the COVID-19 Pandemic	Feng Qian	MSQV	CFA
	WCC Rm 147 A	Achieving Pharmacoequity – A Policy Prescription for Reducing Health Disparities	Utibe Essien	PDSI / SRDE	PR
	WCC Rm 147 B	Modernizing EHRs for Maternal Health Patient-Centered Outcomes Research	Virolanda Grigorescu	DTDA / WH	PCEI
	WCC Rm 150 A/B	Opportunities and Emerging Methods in Learning Health Systems	Mary Reed		MS
11:30 a.m. – 12:00 p.m.		Break			
12:00 p.m. – 1:15 p.m.	Marriott Marquis Ballroom	Closing Plenary - Fireside Chat: Wellbeing as a Systemic Issue - Connecting Science, Management, and Policy for More Timely and Relevant HSR	Julie Rovner Lucy Savitz		
1:15 p.m.		Conference Concludes			

THEME KEY:

APCP	Addressing Patient and Consumer Preferences and Needs
ADE	Aging, Disability, and End-of-Life
CFH	Child and Family Health
DTDA	Digital Technologies, Data, and Analytics
DII	Dissemination, Implementation, and Impact
GHPR	Global Health and Policy Research
HW	Health Workforce
HCHN	High Cost, High Need Populations

ISQV	Improving Safety, Quality, and Value
MSQV	Measuring Safety, Quality, and Value
MCA	Medicaid, Coverage, and Access
MED	Medicare
MHSU	Mental Health and Substance Use
MR	Methods Research
OBM	Organizational Behavior and Management
PCR	Patient-Centered Research
PDSI	Payment and Delivery Systems Innovations
PPH	Public and Population Health

SDSN	Social Determinants and Social Needs
SRDE	Structural Racism, Disparities, and Equity in Health
WH	Women's Health

SESSION TYPE KEY:

CDW	Career Development Workshops
CFA	Call for Abstracts
IG	Interest Group
LBA	Late-Breaking Abstracts

AcademyHealth ANNUAL RESEARCH MEETING

THANK YOU TO OUR SUPPORTERS!

PARTICIPATING FEDERAL AGENCIES



DIAMOND



PLATINUM



GOLD



SILVER



BRONZE



PATIENT SCHOLARSHIPS



INTEREST GROUP SUPPORTERS

Child Health IG



Children's Health System

Disparities IG



Health Economics IG



Learning Health Systems IG



IRGNI



Surgical and Perioperative Care IG



Mental Health and Substance Use Research Interest Group

Johns Hopkins Bloomberg School of Public Health
Center for Mental Health and Addiction Policy & Division of General Internal Medicine
Center for Research on Health Care, University of Pittsburgh

SAY HELLO TO OUR EXHIBITORS

Abt Associates

Booth: 300

<https://www.abtassociates.com/>

Abt Associates is a global consulting and research firm that combines data and bold thinking to improve the quality of people's lives. We partner with clients and communities to advance equity and innovation--from creating scalable digital solutions and combatting infectious disease, to mitigating climate change and evaluating programs for measurable social impact.

AcademyHealth

Booths: 101, 103

<https://academyhealth.org/>

Since its inception, AcademyHealth has been advancing this field by acting as an objective broker of information, bringing together stakeholders to address the current and future needs of an evolving health system, inform health policy and practice, and translate evidence into action. As the professional home and leading national organization for health services researchers, policymakers, and health care practitioners and stakeholders, AcademyHealth – together with its members – increases the understanding of methods and data used in the field, enhances the professional skills of researchers and research users and expands awareness.

Agency for Healthcare Research and Quality (AHRQ)

Booths: 202, 204

<https://www.ahrq.gov/>

AHRQ's mission is to produce evidence to make health care safer, higher quality, more accessible, equitable, and affordable, and to work within the U.S. Department of Health and Human Services and with other partners to make sure that the evidence is understood and used.

American Institutes for Research (AIR)

Booths: 309, 311

<https://www.air.org/>

AIR® is a nonprofit, not-for-profit organization that conducts behavioral and social science research and delivers technical assistance to solve some of the most urgent challenges in the U.S. and around the world. We advance evidence in health, education, the workforce, human services, and international development to create a better, more equitable world.

Arbor Research Collaborative for Health

Booth: 318

<https://www.arborresearch.org/>

Arbor Research Collaborative for Health conducts health care research and provides technical assistance working with a diverse set of funders and stakeholders including government agencies, research organizations, health care organizations, and patients to inform evidenced-based policies, practices, and patient care delivery to improve clinical outcomes and patient lives.

Bureau of Economic Analysis

Booth: 314

<https://www.bea.gov/>

The Bureau of Economic Analysis (BEA) is one of the world's leading statistical agencies, recognized as a key source for the best and most comprehensive economic statistics.

General Dynamics Information Technology (GDIT)

Booth: 200

<https://www.gdit.com/>

We are GDIT. The people supporting the most complex government, defense, and intelligence projects across the country. Bringing the expertise needed to understand and advance critical missions. On the ground, beside our clients, and everywhere in between. Offering the technology transformations, strategy, and mission services to get the job done.

Georgia Health Policy Center

Booth: 203

<https://ghpc.gsu.edu/>

The Georgia Health Policy Center, housed within Georgia State University's Andrew Young School of Policy Studies, provides evidence-based research, program development, and policy guidance locally, statewide, and nationally to improve health status at the community level.

Health Affairs

Booth: 316

<https://www.healthaffairs.org/>

Health Affairs is the leading journal of health policy thought and research. The peer-reviewed journal was founded in 1981 under the aegis of Project HOPE, a nonprofit international health education organization. Health Affairs explores health policy issues of current concern in domestic and international spheres. Its mission is to serve as a high-level, nonpartisan forum to promote analysis and discussion on improving health and health care, and to address such issues as cost, quality, and access.

HealthAPT, LLC

Booth: 213

<http://www.healthapt.com/>

HealthAPT, LLC maintains the CMS Chronic Conditions Warehouse and Virtual Research Data Center (CCW VRDC). The CCW VRDC is the national Medicare and Medicaid health services research database containing data linked by beneficiary, across the continuum of care. The CCW VRDC offers a secure environment, analytic tools, and easy to use, comprehensive data sources.

Health Care Cost Institute

Booth: 205

<https://healthcostinstitute.org/>

The Health Care Cost Institute is a mission-driven, non-partisan, non-profit organization with unique data assets and extraordinary expertise in research and policy. Situated at the nexus between analytics and action, HCCI can bring data and analytics to bear on critical policy questions so that decisionmakers have the information and tools available to craft policies and change structures to make health care more affordable. Check out our research and best-in-class commercial data on our website.

HFX Training

Booth: 412

<https://hfxtraining.com/>

Training your executives to be effective decision-makers in today's environment is a challenge even for the most seasoned L&D program. To solve this challenge, HFX provides business simulation-based training solutions that improve executive decision-making, develop data literacy, and drive learner engagement. Visit <https://hfxtraining.com/healthcare-management/> to learn more.

Health Research and Education Trust - Health Services Research

Booth: 312

<https://www.aha.org/center/hret>

Health Services Research (<https://www.hsr.org/>) is the flagship publication of Health Research and Educational Trust (HRET) and an official journal of AcademyHealth. We publish thoughtful, timely, rigorously conducted research on the financing, organization, delivery, and outcomes of health services relevant to U.S. health care policy and practice. @HSR_HRET

JAMA Network™

Booth: 119

<https://jamanetwork.com/>

JAMA Network advances the study of health policy with high-impact journals including JAMA, JAMA Health Forum, and JAMA Network Open. Explore booth #119 at the AcademyHealth conference to learn more about JAMA Health Forum, our new open access journal focusing on health policy. Learn more at <https://jamanetwork.com/journals/jama-health-forum>.

Johns Hopkins Center for Health Services and Outcomes Research

Booth: 402

<https://www.jhsph.edu/research/centers-and-institutes/health-services-outcomes-research>

Located in the Johns Hopkins Bloomberg School of Public Health, CHSOR is one of the oldest health services research centers in the US. Priority topics include quality of care, patient safety, program evaluation, outcomes research, aging, health IT, and economic evaluation, with special attention paid to vulnerable population groups.

L&M Policy Research, LLC

Booth: 302

<https://lmpolicyresearch.com/>

L&M is a small, women- and minority-owned health policy research and consulting firm that assists government and private organizations in improving U.S. health care. Our staff brings knowledge of public and private health care issues and extensive experience in qualitative and quantitative research methods. Learn more on our website and @LMPolicy.

Mathematica

Booths: 416, 418

<https://www.mathematica.org/>

Mathematica applies expertise at the intersection of data science, social science, and technology to improve well-being around the world. We collaborate closely with public- and private-sector partners to translate big questions into deep insights that improve programs, refine strategies, and enhance understanding. Let's Progress Together.

Mayo Clinic: Robert D. and Patricia E. Kern Center for the Science of Health Care Delivery

Booths: 317, 319

<https://www.mayo.edu/research/centers-programs/robert-d-patricia-e-kern-center-science-health-care-delivery>

The Kern Center brings together unique capabilities, combining design methods, informatics, data science, analytics, health care delivery research, implementation science and health care engineering to solve challenges for patients, providers, and the health care system at large. The center's goal is to provide evidence-based health care delivery solutions to improve practice outcomes. Twitter: @MayoClinic

Medicare Payment Advisory Commission (MedPac)

Booth: 105

<https://www.medpac.gov/>

The Medicare Payment Advisory Commission (MedPAC) is an independent congressional agency that advises the U.S. Congress on issues affecting the Medicare program. MedPAC's work encompasses analyses of payments to providers and private health plans participating in Medicare, as well as beneficiaries' access to care, providers' quality of care, and other issues affecting the program.

National Institute on Aging, Division of Behavioral and Social Research

Booth: 304

<https://www.nia.nih.gov/research/dbsr>

The NIH National Institute on Aging leads a broad scientific effort to understand the nature of aging and to extend the healthy, active years of life. NIA is the primary federal agency supporting and conducting Alzheimer's disease and related dementias research.

NORC at the University of Chicago

Booth: 410

<https://www.norc.org/>

NORC at the University of Chicago is an objective, nonpartisan, research organization that delivers insights and analysis decision-makers trust. Twitter: @NORCNews @NORC_Jobs @APNORC; FB: NORC at the University of Chicago (@NORCatUofC); LinkedIn NORC at the University of Chicago.

Pharmaceutical Care Management Association

Booth: 404

<https://www.pcmanet.org/>

The PCMA Foundation is the non-profit arm of the Pharmaceutical Care Management Association (PCMA). The PCMA Foundation's mission is to provide grants to academic researchers and non-profit organizations to support independent non-partisan research projects.

RAND Corporation

Booth: 213

<https://www.rand.org/>

The RAND Corporation is a research organization that develops solutions to public policy challenges to help make communities throughout the world safer and more secure, healthier, and more prosperous. RAND is nonprofit, nonpartisan, and committed to the public interest.

Research Data Assistance Center (ResDAC)

Booth: 211

<https://resdac.org/>

ResDAC, a CMS contractor located at the University of Minnesota, provides free assistance to researchers interested in requesting and using CMS data for research. ResDAC resources outline strengths, weaknesses, and applications of CMS Medicare & Medicaid data. Services include individual consultation by phone or email, online training and resources, and in-person workshops.

Roper Center for Public Opinion Research

Cornell University

Booth: 308

<https://www.healthpolldatabase.org/hpd/>

Health Poll Database powered by Roper iPoll is the most comprehensive database for health-related U.S. survey questions, covering eighty years of national polling. Surf the concept node network for free or start your keyword search of questions and results, demographic cross-tabulated percentages, and trends on every topic related to health.

RTI International

Booth: 201

<https://www.rti.org/>

RTI International is an independent, nonprofit research institute dedicated to improving the human condition. We combine scientific rigor and technical expertise in social and laboratory sciences, engineering, and international development to deliver solutions to the critical needs of clients worldwide.

StataCorp, LP

Booths: 113, 115, 117

<https://www.stata.com/>

Stata provides everything for health researchers' data science needs—data manipulation, visualization, statistics, and automated reporting. Whether you prefer a GUI, command line, or scripts, Stata puts the statistics you want at your fingertips. No separate modules.

Systems for Action - Colorado School of Public Health

Booth: 408

<https://systemsforaction.org/>

Systems for Action is a national program of the Robert Wood Johnson Foundation that aims to discover and apply evidence about ways of aligning the delivery and financing systems. The S4A program seeks to identify system innovations, particularly system-level drivers of cross-sector collaboration across health services and systems.

University of California, Los Angeles

Center for Health Policy Research

Booth: 400

<https://healthpolicy.ucla.edu/>

The UCLA Center for Health Policy Research (CHPR) is one of the nation's leading health policy research centers and the premier source of health policy information for California. UCLA CHPR is home of the California Health Interview Survey (CHIS), the largest state health survey in the nation.

University of California, Los Angeles

Fielding School of Public Health

Department of Health Policy and Management

Booth: 400

<https://hpm.ph.ucla.edu/>

The UCLA Department of Health Policy and Management advances the effectiveness, efficiency, and equity of health services for personal and population health through research, education programs, and engagement in service to the field. Alumni of its academic programs contribute to change in practice and policy in the US and abroad.

University of Michigan Health Infrastructures and Learning Systems

Booth: 219

<https://medicine.umich.edu/dept/lhs/education>

The University of Michigan Health Infrastructures and Learning Systems (HILS) program aims to improve the health of individuals and populations by developing researchers who design, implement, and evaluate innovative change and continuous improvement in health systems. We offer on campus MS and PhD programs and an online MS program.

University of North Carolina at Chapel Hill

Gillings School of Public Health

Booth: 313

<https://sph.unc.edu/>

The Gillings School's top-ranked Department of Health Policy and Management trains the next generation of leaders in management, policy making and research to address the complex challenges of health care delivery and produce cutting-edge research. We prepare students to improve population health both domestically and globally. We are committed to ensuring all people everywhere have access to high-quality health care services.

University of Pennsylvania

Leonard Davis Institute of Health Economics

Booth: 218

<https://ldi.upenn.edu/>

Since 1967, the Leonard Davis Institute of Health Economics at the University of Pennsylvania has been the leading university institute dedicated to data-driven, policy-focused research that improves our nation's health and health care. We connect and amplify over 500 Fellows across the University and train the next generation of researchers.

University of Pittsburgh
Graduate School of Public Health
Booth: 216

<http://www.publichealth.pitt.edu/hpm>

The Department of Health Policy and Management at the University of Pittsburgh School of Public Health is dedicated to the improvement of health through research focused on health care quality, access, costs, and equity, and through training of future researchers and leaders of public and private health care organizations. <http://www.publichealth.pitt.edu/hpm>

University of Washington
School of Public Health
Booth: 211

<https://depts.washington.edu/hservphd/>

PhD Program in Health Services, University of Washington School of Public Health The mission of the University of Washington's Health Services PhD program is to educate the next generation of health services researchers and prepare them to provide leadership in the field. The program is designed to prepare graduates for research careers in universities, policy-making organizations, health care industry, and government.

VA Health Services Research & Development Service
Booths: 301, 303

<https://www.hsrd.research.va.gov/>

VA's Health Services Research and Development Service (VA HSR&D) supports research to identify, evaluate, and rapidly implement evidence-based strategies that improve the health of, and care for, our nation's Veterans. VA HSR&D funds approximately 1,000 investigators who conduct collaborative, cross-cutting research, on a variety of issues critical to improving the quality and safety of care delivered to all Veterans.

VA Information Resource Center
Booth: 305

<https://www.virec.research.va.gov/>

The Department of Veterans Affairs (VA) Information Resource Center (VIREC) is a Health Services Research and Development (HSR&D) resource center. It was established to improve the quality of VA research that utilizes databases and information systems. VIREC provides database and informatics expertise, education programs, HelpDesk support and consultation, information products, and advocacy for researchers using VA databases and information systems.

Vanderbilt University Medical Center
School of Medicine
Department of Health Policy
Booth: 217

<https://www.vumc.org/health-policy/welcome-health-policy>

The Department of Health Policy at Vanderbilt is committed to training public health leaders and conducting research aimed at informing and impacting public health policy at every level with the belief that research, and innovative thinking should guide health policy relationships and help policymakers understand policy implications.

Virginia Commonwealth University
Health Behavior and Policy
Booth: 215

<https://hbp.vcu.edu/>

<https://ha.chp.vcu.edu/>

VCU is home to graduate education programs in the Departments of Health Administration and Health Behavior and Policy. We conduct interdisciplinary research on the organization and financing of health services and their impact on quality of care, patient outcomes, resource utilization, and cost effectiveness. Our research incorporates the organizational, behavioral, social, and policy factors that affect the health of individuals and populations and evaluates programs and policies designed to promote health and reduce health disparities.

Weill Cornell Medicine
Department of Healthcare Policy & Research
Booth: 214

<https://phs.weill.cornell.edu/education>

The Department of Healthcare Policy and Research at Weill Cornell Medicine trains the next generation of leading researchers and practitioners seeking to develop the most effective ways to organize, coordinate, manage, finance, and deliver high quality care. Study with us and complete your degree in one of our four masters or certificate programs in just twelve months.

Westat
Booth: 209

<https://www.westat.com/>

Westat provides innovative professional services support to clients in addressing challenges to improve outcomes in health, education, social policy, and transportation. We are dedicated to improving lives through research.

Wharton Research Data Services (WRDS)
Wharton School University of Pennsylvania
Booth: 212

<https://wrds.wharton.upenn.edu/>

Wharton Research Data Services provides the leading business intelligence, research services, and data analytics tools to 75,000+ users at 500+ institutions in 35+ countries. WRDS democratizes data access so that all disciplines — Accounting, Economics, ESG, Finance, Healthcare, Insurance, and Statistics — can easily search for concepts. Partnering with global vendors, WRDS hosts 500+TB of data — the broadest collection of data on the most robust computing infrastructure to give users the power to analyze complex information.



CATALYZING

Improving health and health care by catalyzing collaborative, multidisciplinary research that influences policy and practice.

Since 1967, the Leonard Davis Institute of Health Economics at the University of Pennsylvania (Penn LDI) has been the leading university institute dedicated to data-driven, policy-focused research that improves our nation's health and health care. Penn LDI focus areas include health care access and coverage, health equity, improving care for older adults, the opioid epidemic, and population health.

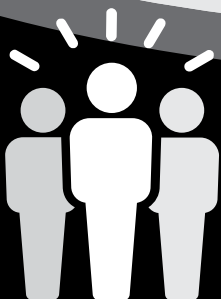
Visit us in the exhibit hall!
BOOTH 218



Health Care that Works for All Californians


The California Health Care Foundation
is helping Californians with low
incomes get the health care they need.

www.chcf.org



670+ health services researchers
working together across the University of Michigan
and beyond to solve complex healthcare challenges.

ihpi.umich.edu

An abstract background graphic on a dark blue field. It features a central figure composed of white dots, with arms extended horizontally. To the right of the figure are three concentric circles in purple, blue, and light blue. Below the figure is a series of vertical bars of varying heights in blue and yellow. The background also includes faint, larger-scale geometric patterns like circles and lines.

Join us for our presentation
on workplace safety in
hospitals during the Health
Workers Safety, Burnout,
and Wellbeing session

Sunday, June 5 @ 12:30pm
Room 145 A/B

Meet our health services researchers to find out more about
Westat's research and career opportunities at **Booth 209**.

Westat's health services research focuses on:

- Patient-Centered Care
- Patient Safety & Quality
- Accountability & Transparency
- Access & Affordability
- Expenditures & Utilization
- Health Equity & Disparities

www.westat.com

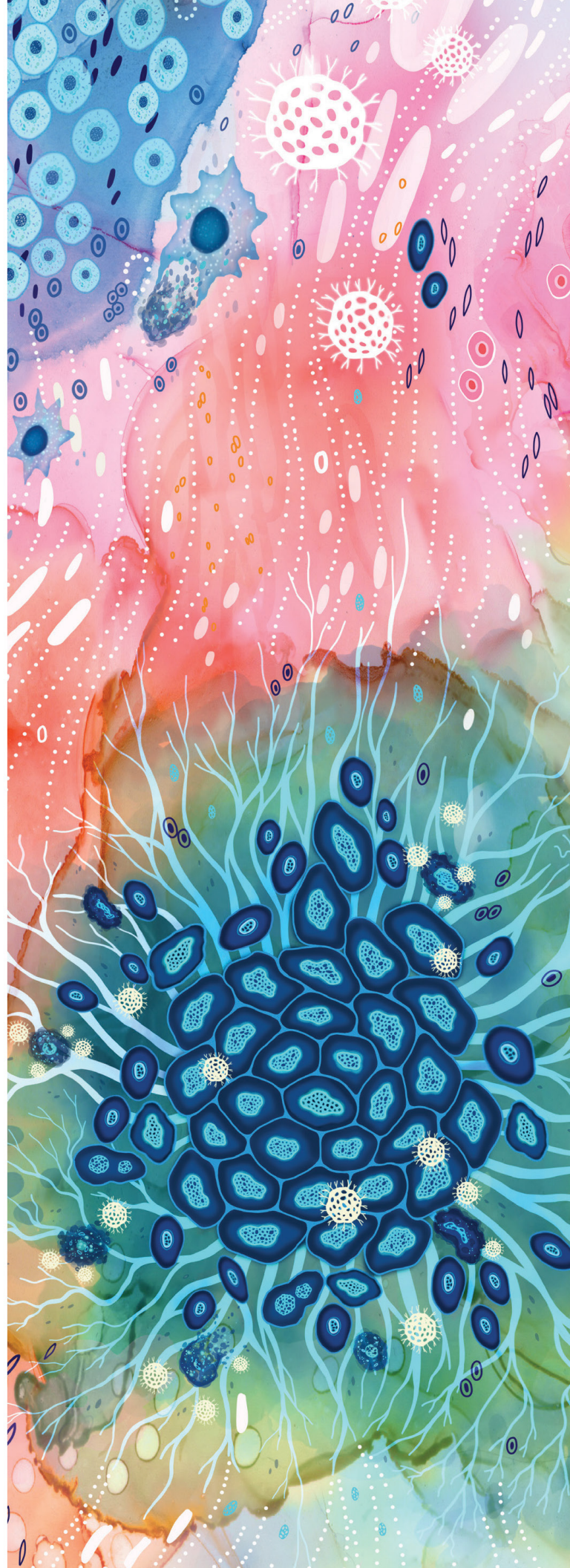


An Employee-Owned Research Corporation®

THEIR FIGHT. OUR MISSION.

Pioneering together
for a cancer-free
tomorrow.

gene.com



Avalere Knows Healthcare.

Avalere Health partners with leading life sciences companies, health plans, providers, and investors to bring innovative, data-driven solutions to today's most complex healthcare challenges.

In a crowded and uncertain field, Avalere gets to the heart of what matters most, delivering targeted, customer-centric research, analytics, insights, and strategies.

Avalere.com | Contact: James Horner at jhorner@avalere.com



| An Inovalon Company

|  @AvalereHealth

|  Avalere Health



VANDERBILT[®]
SCHOOL OF MEDICINE

Health Policy



Associate Professor John Graves, above, and Assistant Professor Mya Roberson.

Impact is our North Star.

In everything we do, members of the Department of Health Policy at Vanderbilt emphasize the effect we have on health and health care. We do this through our MPH, MD, and PhD trainees, our research on policy issues including health access, health equity, infectious disease, global health, prescription drugs, and long-term care, and our partnerships with policymakers and stakeholders.

Established in 2013, we are celebrating nearly 10 years of growth and striving for continued excellence in the decades to come.



@VUHealthPol

www.vumc.org/health-policy

Urban Institute is proud to congratulate **John Holahan** as the recipient of the **2022 AcademyHealth Distinguished Career Award**



As part of the Urban Institute's mission to open minds, shape decisions, and offer solutions through economic and social policy research, the Health Policy Center provides the answers decisionmakers need to address health problems in America.

Health Reform

Medicare and
Medicaid

Substance use
disorder

State and local
initiatives to
improve population
health

Health
equity

Payment and
delivery system
reform

Maternal and
child health

MORE AT [HPC.URBAN.ORG](https://hpc.urban.org)





Progress together.

Mathematica's experts are pioneers in advanced health services research, clinical quality improvement and measurement, data quality, analytics, and emerging methodologies. We pair our expertise with a strong understanding of health care policy, equity, and technological advancements.

+ Join our team!


mathematica.org/career-opportunities

The path ahead needs ideas and approaches that challenge the status quo. We can uncover new solutions together.

We partner with public and private stakeholders across the health continuum to develop, test, and measure strategies that create better oral health for all. Because good overall health depends on good oral health.

We're on the path to transforming oral health care. We hope you join us.

Learn more at carequest.org

CareQuest 
Institute for Oral Health®



Rutgers Center for State Health Policy



Rutgers Center for State Health Policy, an initiative within the Institute for Health, Health Care Policy and Aging Research, was established in 1999 with funding from the Robert Wood Johnson Foundation and a mission to inform, support, and stimulate sound and creative state health policy in New Jersey and around the nation. The Center provides impartial policy analysis, research, training, facilitation, and consultation on important state health policy issues.

Research Focus | The Center combines Rutgers University's traditional academic strengths in public health, health services research, and social science with applied research and policy analysis initiatives. The Center's signature areas of research include:

- Population Health and Health Equity
- Access and Coverage
- Health System Performance Improvement
- Health Workforce
- Long-Term Services and Supports

Examples of Current Work | The Center's work is supported by grants and contracts from a broad array of federal and state agencies as well as health care philanthropies and private organizations. Our diverse funding portfolio includes:

- The Role of Homelessness and Supportive Housing in Healthcare Disparities Among Adults in Medicaid (**National Institute on Minority Health & Health Disparities - NIMHD**)
- Implementation of the Integrated Population Health Data (iPHD) Project (**New Jersey Department of Health**)
- Facilitation and Staff Support for the NJ Sustainable Health Care Cost Benchmark Initiative (**New Jersey Office of the Governor**)
- Evaluation of the New Jersey FamilyCare Comprehensive Demonstration (**New Jersey Department of Human Services, Division of Medical Assistance and Health Services**)
- The New Jersey Population Health Cohort Study (**Robert Wood Johnson Foundation**)

Visit Rutgers Center for State Health Policy and learn more about our current projects, faculty and staff, latest employment opportunities, events, and publications.



WE'RE IN THIS TOGETHER.

At Kaiser Permanente, we don't see health as an industry. We see it as a cause. And one that we very much believe in. During this extraordinary time we are especially thankful to the heroism of our frontline workers. We would like to express our deepest gratitude to all of our outstanding care teams and individuals who deliver on the Kaiser Permanente mission each day to improve the health of our members and the communities we serve. We are here to help you thrive. **Learn more at kp.org.**



Unleashing data to transform the future of health

Patient-centered. Interoperable.
Digitally connected.

Bringing together the right ideas, data and people at the right time can lead to powerful insights. Our knowledge and experience can help inform your strategy, advance collaboration, and accelerate your impact and mission.

Let us help you make an impact that matters.

www.deloitte.com/us/federalhealth



Health Data in Action

At the forefront of national efforts to find data-driven solutions to complex problems facing state policymakers as publicly funded health care systems transition to new models that reward quality and value over volume.



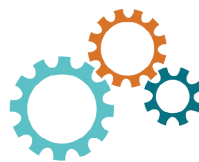
**Health Care
Access &
Affordability**



**Rate Setting &
Payment Reform**



**Aging &
Disability**



**Behavioral
Health**



**Social
Determinants of
Health**



**Hospital
Community
Benefit**

Join Our Team

We are seeking **Quantitative Policy Analysts** who will apply a suite of analytical methods to multiple sources of health care data to conduct highly sophisticated analytics and health services research to find data-driven solutions to complex problems facing state policymakers as publicly funded health care systems transition to new models that reward quality and value over volume. These new positions are integral to address our expanding portfolio of work and ensure that our analytical capacity can support a growing client base. If you have a keen interest in federal and state health policy, outstanding qualitative and quantitative research skills, and a passion for advancing the health and wellbeing of people and communities, join us! [Learn More/Apply](#)

THE HILLTOP INSTITUTE IS PROUD TO BE A GOLD SPONSOR OF THE ARM

The Hilltop Institute is a nonpartisan research organization at the University of Maryland, Baltimore County (UMBC) dedicated to improving the health and wellbeing of people and communities. We conduct cutting-edge data analytics and translational research on behalf of government agencies, foundations, and nonprofit organizations to inform public policy at the national, state, and local levels. We are committed to addressing complex issues through informed, objective, and innovative research and analysis.

Integrating research, policy, and programs
to advance health and well-being.



Behavioral Health

Health In All Policies

Child Health & Wellbeing

Health Systems Transformation

Community Health Systems
Development

Long-Term Services Support

Health & Health Care Financing

Population & Global Health

Rural Health

FOLLOW US:



@GeorgiaHealthPolicyCenter



@GSUGHPC

ghpc.gsu.edu



GDIT

Art of the possible.

HEALTH

On the frontlines of innovation.

TECHNOLOGY | HEALTH SYSTEMS | SCIENCE

gdit.com/health



**AcademyHealth
members are at
the forefront of the
evolving health
services research and
health policy field.**

Benefits of Joining AcademyHealth

- Discounts on registration fees to attend AcademyHealth's premier conferences;
- Leadership opportunities through Interest Groups, councils and committees;
- Connect with the leaders in the field for valuable networking and mentoring opportunities;
- Access to unique professional development offerings and insight on new career opportunities;
- Stay up-to-date on the field – from the newest job openings to the current events in the AcademyHealth daily and weekly updates.



JOIN TODAY

www.academyhealth.org/Membership

BEHAVIORAL HEALTH RESOURCES AND TECHNICAL ASSISTANCE (BHRT) PROGRAM



The Behavioral Health Resources and Technical Assistance (BHRT) Program at the University of Maryland School of Pharmacy provides technical assistance to guide communities across Maryland in addressing substance use prevention issues. The BHRT Program has been providing assistance to organizations working in substance use for more than ten years.

RESEARCH | EVALUATION | TECHNICAL ASSISTANCE | TRAINING

Our Mission

To improve public health by bridging the gap between research and practice through technical assistance and evaluation.

BHRT's expertise includes:

- Research
- Evaluation
- Data Analysis
- Data Visualization
- Survey Development
- Technical Assistance
- Training



Our Team

BHRT team members are skilled in working with organizations to craft needs assessments, identify effective strategies, implement programs and policies, and evaluate activities. The BHRT Program currently serves as the evaluation and technical assistance provider for the Maryland Department of Health.

Fadia T. Shaya, PhD, MPH

Executive Director

fshaya@rx.umaryland.edu

Nicole Sealfon, MPH

Associate Director

nsealfon@rx.umaryland.edu

Vanessa Michel

Program Specialist

vmichel@rx.umaryland.edu

Michelle N. Taylor, PhD, MBA, MS, CPP

Associate Director

mtaylor@rx.umaryland.edu

Paris Barnes

Communications Program Specialist

paris.barnes@rx.umaryland.edu



Need help? Complete **this form** to request assistance

BHRT@rx.umaryland.edu



PATIENT-CENTERED OUTCOMES RESEARCH INSTITUTE

Research Done Differently®

The Patient-Centered Outcomes Research Institute (PCORI) is an independent, nonprofit organization authorized by Congress to fund comparative clinical effectiveness research. The studies we fund are designed to produce reliable, useful information that will help patients, caregivers, clinicians, policy makers, and others make better-informed health and healthcare decisions.

Key Features of PCORI-Funded Research

- Compares at least two alternative healthcare options
- Focuses on outcomes that are meaningful to patients
- Engages patients and other stakeholders at every stage
- Seeks to improve current clinical practice

Learn more at pcori.org
and follow us on



VA Health Services Research & Development



Advancing **evidence** in support of policy change.

Building **quality** for the nation's only integrated healthcare system.

Improving **care** for our nation's Veterans.

Serving those who served.



VA



**U.S. Department
of Veterans Affairs**

**Veterans Health
Administration**



Subscribe to *Health Affairs* at a discounted price!

Health Affairs, the leading publication on health policy and health services, is available at a discounted price as an AcademyHealth member benefit.

With a subscription to *Health Affairs*, you get:

- » **12 monthly issues**, including theme issues on key topics such as Racism & Health, Disability & Health, and more
- » Subscriber-only access to **40+ years** of digitally archived content
- » Articles on **health spending** and other important topics!

Contact the AcademyHealth membership department today to get your discounted subscription.

Health Affairs' Event Series

With our in-person and virtual events, we bring together a diverse audience from the public and private sectors, academia, and the media to share insightful conversations on the latest policy topics affecting health care today.

Register for
our upcoming
events today!



Policy Spotlight events feature wide-ranging conversations with influential health policy experts in Washington, D.C., and beyond.



Inspired by a century-old tradition, Journal Club events feature authors of an impactful Health Affairs study for an up-close look at research, methods, and findings.



At Lunch And Learn events, midday minisymposia for policy professionals, Health Affairs hosts top researchers and analysts to discuss timely topics and initiatives affecting health policy.



Health Affairs editors and special guests host our Professional Development events—gatherings aimed at early- to midcareer professionals offering “how to” tips for scholarly publishing, peer review, and more.



The
Commonwealth
Fund

Affordable, quality health care. For everyone.

For more than a century, the independent, nonpartisan Commonwealth Fund has supported research and disseminated information about ways we can achieve a high-performing health system for all.

We support efforts to:

- expand health coverage and access to care
- advance health equity
- reform care delivery and payment
- lower costs
- improve behavioral health care
- modernize public health systems
- examine health care's role in climate change

commonwealthfund.org

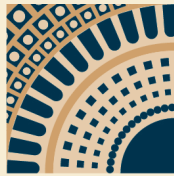


@commonwealthfnd



commonwealthfund

Stay informed about our current work by signing up for eAlerts, or follow us on Twitter, LinkedIn, and Facebook.



Robert Wood Johnson Foundation
Health Policy Fellows

Transforming Leaders to Transform Health

APPLY SEPTEMBER-OCTOBER 2022

For more information, visit HealthPolicyFellows.org

- Seeking outstanding mid-career health professionals, academics, scientists, & others focused on health
- 12-month residence in Washington, DC
- Placement in congressional or executive branch offices
- Contribute to the development of national health policy
- **Accelerate your career as a health leader**

INFORMATION SESSION

at the AcademyHealth
Annual Research Meeting

Monday, June 6, 3:00 to 4:00 pm
Room 143-C
Washington Convention Center





NIHCM
FOUNDATION

Grants for Investigator-Initiated Health Care Research

NIHCM Research Grant Program

Approximately \$500,000 available

Letters of Inquiry Due
July 1, 2022

nihcm.org/grants/research-grants

AUPHA2022

THE EVOLUTION OF NORMALITY:
EMBRACING SHIFTING BOUNDARIES
AUPHA 2022 | June 7-9 | Salt Lake City

The Association of University Programs
in Health Administration
wishes AcademyHealth a great
2022 Annual Research Meeting!

.....

AUPHA thanks AcademyHealth
for their generous sponsorship of
Michael Good, MD,
keynote speaker at the 2022 Annual Meeting.

For more information about AUPHA,
and to register for the Annual Meeting,
please visit www.aupha.org




Transforming research and promoting equity through the power of data

Come by RTI International's booth (#201)
and join the change for **equity**.



Learn more about RTI's
posters and presentations

www.rti.org



CMS Framework for Health Equity 2022–2032

Definition of Health Equity

The attainment of the highest level of health for all people, where everyone has a fair and just opportunity to attain their optimal health regardless of race, ethnicity, disability, sexual orientation, gender identity, socioeconomic status, geography, preferred language, or other factors that affect access to care and health outcomes. CMS is working to advance health equity by designing, implementing, and operationalizing policies and programs that support health for all the people served by our programs, eliminating avoidable differences in health outcomes experienced by people who are disadvantaged or underserved, and providing the care and support that our enrollees need to thrive.

CMS Framework for Health Equity Priorities



Priority 1: Expand the Collection, Reporting, and Analysis of Standardized Data



Priority 2: Assess Causes of Disparities Within CMS Programs, and Address Inequities in Policies and Operations to Close Gaps



Priority 3: Build Capacity of Health Care Organizations and the Workforce to Reduce Health and Health Care Disparities



Priority 4: Advance Language Access, Health Literacy, and the Provision of Culturally Tailored Services



Priority 5: Increase All Forms of Accessibility to Health Care Services and Coverage

“As the nation’s largest health insurer, the Centers for Medicare & Medicaid Services has a critical role to play in driving the next decade of health equity for people who are underserved. Our unwavering commitment to advancing health equity will help foster a health care system that benefits all for generations to come.”



Dr. LaShawn McIver,
Director, CMS Office
of Minority Health

To read the CMS Framework for Health Equity 2022-2032, visit go.cms.gov/framework.

The CMS Office of Minority Health offers health equity technical assistance resources, aimed to help health care organizations take action against health disparities. If you are looking for assistance, visit go.cms.gov/omh or email HealthEquityTA@cms.hhs.gov.





**Gain valuable insights from nurse practitioners
on the front lines of health care delivery.**

NPINFLUENCE

Leverage data gathered from an online panel of nurse practitioners (NPs) to help inform health care industry products, services and patient care. NPInfluence provides access to more than 5,000 NPs practicing in primary, acute and specialty care within the United States.

These clinicians have unique experiences that enrich the health care field. Whether your research needs are market-based or academically focused, consider using NPInfluence today!

CONTACT NPINFLUENCE

Website: aanp.org/npinfluencepanel

Phone: 512-442-4262

Email: research@aanp.org

NPInfluence

Health Insights Delivered.

A product of the American Association of Nurse Practitioners®

Kaiser Permanente Northern CA Delivery Science Postdoctoral Fellowship (two-year, full-time program)

Postdoctoral Fellows work closely with research & career mentors who partner directly with Kaiser Permanente physicians and clinical operations leaders to develop, implement, and evaluate innovative research and quality improvement projects for patient care, in one of the nation's leading integrated delivery systems. *Clinical Informatics Track also available.*

About Us

The Division of Research, Kaiser Permanente Northern California, offers a post-doctoral research fellowship program to train fellows in translating research into practice. We seek outstanding candidates with health professional doctorate degrees (e.g. MD, PharmD or equivalent) and/or research doctorate degrees (e.g. PhD, ScD, DrPH or equivalent).

The Kaiser Permanente Northern California Division of Research, based in Oakland, California, has 62 faculty-level investigators and more than 587 ongoing, funded projects on a wide range of health research topics. In 2021, the Division's research portfolio totaled over \$136 million in grants awarded by the NIH, other federal agencies, private foundations, industry, and Kaiser Permanente.

Applications are due November 15, 2022, for the July 2023 cohort. Candidate interviews will be scheduled for December 2022.

The Milbank Quarterly
is an established, trusted source of
evidence on population health that
can help leaders understand and
improve health for all

THE
**MILBANK
QUARTERLY**
A MULTIDISCIPLINARY JOURNAL OF
POPULATION HEALTH AND HEALTH POLICY

www.milbank.org

@MilbankFund

Geisinger



The Department of Population Health Sciences (DPHS) within the Geisinger Research Institute is growing and seeks to recruit a **Health Economics** open rank faculty position. The DPHS is embedded in the Geisinger health system, a large integrated health system in Pennsylvania, and the Geisinger Commonwealth School of Medicine. The DPHS faculty includes epidemiologists, biostatisticians, behavior scientists, health economists, and clinician researchers. Faculty have access to vast data resources, including longitudinal electronic medical record (EMR) data spanning more than 25 years, claims, genomic, and environmental data. The Department collaborates closely with the Geisinger Health Plan, a health insurance company in Pennsylvania.

Candidates must possess an earned doctorate (e.g., PhD, MD). The position is open rank; however, priority is given to associate and full professor levels. Experience in the use of EMR and claims data is preferred. Expertise in the following area is of interest: access to health care and the role of insurance coverage; effects of provider payments and delivery system reforms on health care costs and quality. The successful candidate will be expected to develop an externally funded research program, either through independent or collaborative projects, and provide service to the health system and their profession. Appointment at higher levels must show a record of extramural grant funding as a Principal or Co-Investigator and publication of peer-reviewed research.

Applicants are to submit a cover letter that addresses the qualifications for the position and a CV. For additional information and to submit materials, please email Search Committee, Department of Population Health Sciences (DPHS@geisinger.edu). *Does not qualify for J-1 waiver. We are an Affirmative Action, Equality Opportunity Employer. Women and Minorities are Encouraged to Apply. All qualified applicants will receive consideration for employment and will not be discriminated against on the basis of disability or their protected veteran status.



advancing health through
policy research since 1972



The Road to Better Health is Seldom Straight

For 50 years, the Philip R. Lee Institute for Health Policy Studies has traveled the twisting road towards better health for everyone. IHPS supports, guides and enables policymakers, communities and clinicians in making evidence-informed decisions.

Learn more about our impact and how our fellowship programs are training the next generations at healthpolicy.ucsf.edu

490 Illinois Street
7th Floor
San Francisco, CA 94158
healthpolicy@ucsf.edu

UCSF Philip R. Lee Institute for
Health Policy Studies



We are proud to support
Academy Health's
Annual Research Meeting

When we work together to remove the barriers to health and well-being, especially for Californians most affected, we can create a more just and equitable future free of domestic violence.

blueshieldcafoundation.org

blue  of california
foundation

Blue Shield of California Foundation is an independent licensee of the Blue Shield Association

SYSTEMIC RACISM IS AS REAL AS ANY DISEASE. OUR INDUSTRY IS NOT IMMUNE.

Diversity is essential to a robust innovation ecosystem that can create new medicines for those who need them. America's biopharmaceutical companies are pushing for necessary, positive and long-term change to better meet the needs of Black and Brown America. That means:

- Open, honest, real conversations about racial equity and what it means to have a culture of inclusion.
- Expanding opportunities to work and succeed in our industry.
- Advancing policy solutions and research to better address health disparities.
- Diversifying our business practices to better invest in Black and Brown America.
- Earning trust and addressing systemic issues that deter Black and Brown communities from participating in clinical trials, so that people who want to participate, can.

Follow our progress at phrma.org/equity



Community Resilience: Equitable Practices for an Uncertain Future

The fifth volume of the *RWJF Culture of Health* book series explores people's lived experiences surrounding health equity and the importance of resilience. Stories are authored by policymakers, formerly incarcerated individuals, award-winning journalists, public health officials, and many more.

Order your free copy at rwjf.org/communityresilience



Robert Wood Johnson
Foundation



Robert D. and Patricia E. Kern Center
for the Science of Health Care Delivery

Transforming the experience of health and health care.

The Mayo Clinic Robert D. and Patricia E. Kern Center for the Science of Health Care Delivery brings together unique capabilities, combining design methods, informatics, data science, analytics, health care delivery research, implementation science and health care engineering to solve challenges for patients, providers and the health care system at large. The center's goal is to provide evidence-based health care delivery solutions to improve practice outcomes.

Through developing, analyzing and rapidly diffusing solutions for the transformation of health care, the Kern Center drives the transformation of the Mayo Clinic practice to achieve high-value patient-centered care and serve as a global leader in the discovery, translation and application of innovative solutions.

**Plan to attend the Mayo Clinic sponsored special session during AcademyHealth's ARM 2022:
"Diversity Science: moving from cosmetic victories to integrated actions within a Learning Health System" on Monday, June 6, 4:15p.m. - 5:45 p.m. ET.**

VISIT [MAYOCLINIC.ORG](https://www.mayoclinic.org)
TO LEARN MORE ABOUT CAREERS AT MAYO
CLINIC VISIT: [JOBS.MAYOCLINIC.ORG](https://www.mayoclinic.org/jobs)

Geisinger



The Department of Population Health Sciences (DPHS) within the Geisinger Research Institute is growing and seeks to recruit a **Health Services Researcher (HSR)** with health care delivery experience or training for an open rank faculty position. The DPHS is embedded in the Geisinger health system, a large integrated health system in Pennsylvania, and the Geisinger Commonwealth School of Medicine. The DPHS faculty includes epidemiologists, biostatisticians, behavior scientists, health economists, and clinician researchers. Faculty have access to vast data resources, including longitudinal electronic medical record (EMR) data spanning more than 25 years, claims, genomic, and environmental data. The Department collaborates closely with several clinical departments. The DPHS is interested in HSR faculty to develop and test new care delivery models aimed to reduce barriers to care, reduce costs, and improve outcomes.

Candidates must possess an earned doctorate (e.g., PhD, MD). The position is open rank; however, priority is given to associate and full professor levels. Experience in the use of EMR data is preferred. The successful candidate will be expected to develop an externally funded research program, either through independent or collaborative projects, and provide service to the health system and their profession. Appointment at higher levels must show a record of extramural grant funding as a Principal or Co-Investigator and publication of peer-reviewed research.

Applicants are to submit a cover letter that addresses the qualifications for the position and a CV. For additional information and to submit materials, please email Search Committee, Department of Population Health Sciences (DPHS@geisinger.edu). *Does not qualify for J-1 waiver. We are an Affirmative Action, Equality Opportunity Employer. Women and Minorities are Encouraged to Apply. All qualified applicants will receive consideration for employment and will not be discriminated against on the basis of disability or their protected veteran status.

The Health and Aging Data (HaAD) Enclave

The HaAD Enclave is a free, cloud-based platform that provides researchers with access to linked data sets. These data sets are linked to data for Medicare and Medicaid beneficiaries.

MedRIC

How can I join?
Visit us at **Booth 304**



Why Join the HaAD Enclave?

- Get standardized CMS data structures and variables for analysis
- Support efficient programming and analysis in a FISMA-certified platform
- Analyze critical conditions such as Alzheimer's disease, dementia, and COVID-19 for older adults
- Produce high-impact research findings

This resource is funded by the National Institute on Aging (NIA).

☎ (650) 558 - 8310

✉ medric@acumenllc.com

🌐 <https://www.medric.info/>



We drive evidence-based policy solutions to improve health care delivery, lower costs, and reduce disparities in access.

- > Drug Prices
- > Clinical Trials
- > Commercial Sector Prices
- > Complex Care
- > Provider Payment Incentives
- > Medicare Sustainability

To advance change, we work with diverse partners on **research, policy development, technical assistance and advocacy, and visibility and communications.** Connect with us.

arnoldventures.org

Houston (HQ) | Washington, D.C. | New York City