



AcademyHealth  
**NATIONAL  
HEALTH POLICY  
CONFERENCE**

**AGENDA AT A GLANCE  
SUPPORTERS  
EXHIBITORS  
ADVERTISEMENTS**

# AGENDA AT A GLANCE

Time	Location	Title	Chair(s)	Session Type
<b>MONDAY, APRIL 4</b>				
7:00 a.m.–5:00 p.m.	Sky View	Registration		
7:30–8:30 a.m.	Salon F	Meet the Experts Student Event		
8:00–9:00 a.m.	Foyer	Continental Breakfast		
8:00–9:00 a.m.	Salon K	Unconference Session: Donuts and Data - A Health Data Potluck!	Fred Trotter	
9:00–10:15 a.m.	Arlington Ballroom/ Virtual	Plenary <ul style="list-style-type: none"> <li>• Welcome</li> <li>• Opening Keynote: Commissioner Robert Califf</li> <li>• Panel: New Data and Paradigms for Advancing Health Equity</li> </ul>	Lisa Simpson Laurie Zephyrin	
10:15–10:45 a.m.		Break		
10:45 a.m.–12:00 p.m.	Salon B	Focusing on “Health” in Health & Human Services: Data-Driven SNAP Outreach for a Healthier NC	Khaylah Epps	HDP Panel
	Salon C	Price Transparency for Medical Care: Ready for Prime Time?	Stephen Parente	NHPC Panel
	Salon D/E	Rapid Fire: The Devil is in the Details: Under the Hood of Healthcare Transformation	Jessie Tenenbaum	NHPC Rapid Fire
	Salon H	No Aggregation without Representation	Andrea Downing	NHPC Panel
	Salon J	Rapid Fire: Modern Measures for Patients, Pros, & Populations	Kenyon Crowley	HDP Rapid Fire
	Virtual	The Concept of “One:” Integrating Medicare and Medicaid for Dual-Eligible Beneficiaries	Aparna Higgins	NHPC Panel
	Virtual	Building and Applying the Social Determinants of Health Research Database (SDOH-RD)	Scott Smith	HDP Panel
	Virtual	Long COVID: Impact, Evidence and Exploring Solutions	Matt Zachary	NHPC Panel
12:00–1:00 p.m.		Lunch on Your Own		
12:15–1:00 p.m.	Salon K	Unconference Session: Gravity Project: Moving Social Determinants of Health Data into Action Nationwide		
1:00–2:15 p.m.	Salon B	Policy Opportunities to Address Intractable Patient Safety Problems	Karen Feinstein	NHPC Panel
	Salon C	Building Models and Solutions Equitably and Inclusively in Health and Healthcare	Ivor Horn	HDP Panel
	Salon D/E	Rapid Fire: Innovation and Transformation	Harry Greenspun	HDP Rapid Fire
	Salon J	Rapid Fire: Transforming Care During COVID and Beyond	Michael Gluck	NHPC Rapid Fire
	Virtual	COVID-19 Management from the Learning Health System Perspectives	Wanmei Ou	HDP Panel
	Virtual	NEXTGEN: Interoperable Infrastructure and Data	Jodi Daniel	HDP Panel

## AGENDA AT A GLANCE

Time	Location	Title	Chair(s)	Session Type
2:45–4:00 p.m.	Salon B	Telehealth Utilization during COVID-19: Policy Implications from Three States	Akeiisa Coleman	NHPC Panel
	Salon C	Practicing Responsible AI: Risks, Challenges & Opportunities	Suman De	HDP Panel
	Salon D/E	Using Social Determinants of Health Data to Address Postpartum Mental Health	Michael Dulin	HDP Panel
	Salon H	Transforming Medicare and Medicaid Beyond COVID-19 for a Person-Centered Future <i>Supported in part by The SCAN Foundation</i>	Sarah Dash	NHPC Panel
	Salon J	Rapid Fire: Data to Improve Health and Well-Being	Kistein Monkhouse	HDP Rapid Fire
	Virtual	The Data That Can Move Us Beyond Episodic Care	Heather Landi	HDP Panel
	Virtual	Rapid Fire: How Geography, History, and Demographics Impact Access and Care Delivery	Margo Edmunds	NHPC Rapid Fire
4:00–4:15 p.m.		Break		
4:15–5:15 p.m.	Arlington Ballroom/ Virtual	Plenary <ul style="list-style-type: none"> <li>Fireside Chat: Climate Change, Health, and Resiliency</li> <li>Panel: Investing in Innovation: Market Dynamics to Watch</li> </ul>	Ceci Connolly	
5:15–6:15 p.m.	Arlington Ballroom Salons 5-6	Poster Session & Reception		
6:00–7:00 p.m.	Salon K	Unconference Session: ePatient Gathering	Andrea Downing	
<b>TUESDAY, APRIL 5</b>				
7:00 a.m.–4:30 p.m.	Sky View	Registration		
8:00–9:00 a.m.	Foyer	Continental Breakfast		
8:00–9:00 a.m.	Salon K	Unconference Session: Technology As a Social Determinant of Health	Amanda Purnell / Priya Joshi / Michael Harry	
9:00–10:15 a.m.	Arlington Ballroom/ Virtual	Plenary <ul style="list-style-type: none"> <li>Keynote: Carrie Wolinetz</li> <li>Panel: Delivering on the Promise of Consumer Tech for All Patients</li> <li>Keynote: Costs, Inflation and their Impact on Health and Health Policy</li> </ul>	Rasu Shrestha Peter Orszag	
10:15–10:45 a.m.		Break		
10:45 a.m.–12:00 p.m.	Salon B	The Future of Risk Adjustment in Payment Policy: Putting Goals Before The Data	J. Michael McWilliams	NHPC Panel
	Salon C	Addressing Inequities in Behavioral Health through Expanded Access	Ceci Connolly	NHPC Panel
	Salon D/E	Making Care Personal by Leveraging Data	Lindsay Deneault	HDP Panel
	Salon H	Closing Data Gaps to Improve Future Pandemic Preparedness <i>Supported in part by PhRMA</i>	Freda Lewis-Hall	HDP Panel
	Salon J	Rapid Fire: Innovative Analytics for Health Equity and Population Health	Abdul Shaikh	HDP Rapid Fire
	Virtual	Regulatory Incentives for Racial and Ethnic Diversity in Clinical Trial Data	Kirsten Carmel	HDP Panel
	Virtual	Rapid Fire: Accelerating Technology to Navigate the Balance between Privacy, Interoperability and Disease Tracking	Brooke McSwain	NHPC Rapid Fire
12:00–1:00 p.m.		Lunch on Your Own		

## AGENDA AT A GLANCE

Time	Location	Title	Chair(s)	Session Type
12:15–1:00 p.m.	Salon K	Unconference Session: How A Community View Can Provide Clues to More Equitable Aging in Place	Ellen Rudy / Kelsey McNamara	
1:00–2:15 p.m.	Arlington Ballroom	Drug Price Regulation Trade-offs: Real or Imagined? <i>Supported in part by National Pharmaceutical Council</i>	John O'Brien	NHPC Panel
	Salon B	Partnerships, Data, & Digital Innovations: How PCORnet® Is Providing Fast COVID-19 Answers	Russell Rothman	HDP Panel
	Salon C	Sexual and Reproductive Health, Rights and Justice: Peering at Post-Roe World through an Equity Lens	Herminia Palacio	NHPC Panel
	Salon H	Improving Health Insurance Coverage By Reducing Administrative Barriers	Stan Dorn	NHPC Panel
	Salon J	Rapid Fire: Ransomware, Misinformation, Bias (oh my!): How Consumers Can Win With Healthtech	Ozgur Tunceli	HDP Rapid Fire
	Virtual	Federal Data Standards: A Look at CMS's and ONC's Key Work	Lisa Suter	HDP Panel
	Virtual	Leveraging Payment Reforms to Expand Home-Based Care for People with Complex Health Needs	Jonathan Gonzalez-Smith	NHPC Panel
2:45–4:00 p.m.	Arlington Ballroom/ Virtual	Advancing Health Equity through Payment Innovation	Elizabeth Fowler Meghan Elrington-Clayton	
	Salon B	Expanding Telemedicine Policy in Medicaid: A State Level Perspective	Tracy Johnson	HDP Panel
	Salon C	Private Sector Support for Accountable Care Models	Robert Saunders	NHPC Panel
	Salon D/E	Addressing the Social Needs of Medicaid Enrollees: The Role of Managed Care	Jennifer Moore	NHPC Panel
	Salon J	Rapid Fire: Systems for Monitoring Health and Equity during Public Health Emergencies and Beyond	ClarLynda Williams-DeVane	HDP Rapid Fire
	Virtual	Taking Steps Toward More Seamless Data Exchange and Health Equity By Modernizing Consent	Pooja Babbar	HDP Panel
	Virtual	Herding Cattle or Cats? the State of Multipayer Initiatives	Cristina Bocutti	NHPC Panel
4:00–4:15 p.m.		Break		
4:15–5:15 p.m.	Arlington Ballroom/ Virtual	Plenary • Panel: Restoring and Rebuilding our Health Workforce • Panel: Dismantling Discrimination in Health	Gail Wilensky Helen Burstin	





# THANK YOU TO OUR SUPPORTERS!

## PARTICIPATING FEDERAL AGENCIES



## DIAMOND



## PLATINUM



## GOLD



## SILVER



## BRONZE



## MEDIA PARTNER



## PATIENT SCHOLARSHIPS



# SAY HELLO TO OUR EXHIBITORS

## **AcademyHealth – Booth**

[www.academyhealth.org](http://www.academyhealth.org)

Since its inception, AcademyHealth has been advancing this field by acting as an objective broker of information, bringing together stakeholders to address the current and future needs of an evolving health system, inform health policy and practice, and translate evidence into action. As the professional home and leading national organization for health services researchers, policymakers, and health care practitioners and stakeholders, AcademyHealth – together with its members – increases the understanding of methods and data used in the field, enhances the professional skills of researchers and research users, and expands awareness.

## **Agency for Healthcare Research and Quality – Table 3**

[www.ahrq.gov](http://www.ahrq.gov)

The Agency for Healthcare Research and Quality's (AHRQ) mission is to produce evidence to make health care safer, higher quality, more accessible, equitable, and affordable, and to work within the U.S. Department of Health and Human Services and with other partners to make sure that the evidence is understood and used.

## **Center for Improving Value in Health Care – Table 6**

[www.civhc.org](http://www.civhc.org)

Center for Improving Value in Health Care (CIVHC) is an objective, not-for-profit organization. Through services, health data, and analytics, we partner with Change Agents to drive towards the Triple Aim for all Coloradans. We believe that together we can alter the trajectory of health care and we are privileged to serve those striving toward a better health system for us all.

## **Duke University School of Medicine, MMCI Program – Table 13**

[www.mmci.duke.edu](http://www.mmci.duke.edu)

Duke University's Master of Management in Clinical Informatics prepares health care professionals to work at the intersection of data, technology, health care and business. The curriculum is an integration of business and clinical informatics courses preparing graduates to think critically about the application of technology and data through a business framework. This 12-month program is formatted for working clinical, technical and business health care professionals. Classes are every other weekend. On a monthly basis, there is a blend of asynchronous plus one Saturday online live, plus one Friday and Saturday on campus. The program includes professional development seminars and career coaching from an executive coach. Accepting applications for late July start. Scholarships available for admitted students.

## **Georgia Health Policy Center – Table 5**

[www.ghpc.gsu.edu](http://www.ghpc.gsu.edu)

The Georgia Health Policy Center, housed within Georgia State University's Andrew Young School of Policy Studies, provides evidence-based research, program development, and policy guidance locally, statewide, and nationally to improve health status at the community level.

## **Guidehouse – Table 7**

[www.guidehouse.com](http://www.guidehouse.com)

Guidehouse is a leading global provider of consulting services to the public sector and commercial markets, with broad capabilities in management, technology, and risk. The company's Health segment integrates consulting and outsourcing expertise to help hospitals and health systems, government agencies, life sciences and retail companies, payers, and other organizations solve their most complex issues and deliver innovative services to their communities. With 12 KLAS #1 rankings, Guidehouse was also ranked 2021's third largest healthcare management consulting firm by Modern Healthcare. Visit the Guidehouse Center for Health Insights for healthcare payment, operational, and consumer disruption insights and solutions.

## **Health Care Cost Institute – Table 8**

[www.healthcostinstitute.org](http://www.healthcostinstitute.org)

The Health Care Cost Institute is a mission-driven, non-partisan, non-profit organization with unique data assets and extraordinary expertise in research and policy. Situated at the nexus between analytics and action, HCCI can bring data and analytics to bear on critical policy questions so that decisionmakers have the information and tools available to craft policies and change structures to make health care more affordable. Check out our research and best-in-class commercial data at [www.healthcostinstitute.org](http://www.healthcostinstitute.org).

## **Health Affairs – Table 11**

[www.healthaffairs.org](http://www.healthaffairs.org)

Health Affairs is the leading journal of health policy thought and research. The peer-reviewed journal was founded in 1981 under the aegis of Project HOPE, a nonprofit international health education organization. Health Affairs explores health policy issues of current concern in domestic and international spheres. Its mission is to serve as a high-level, nonpartisan forum to promote analysis and discussion on improving health and health care, and to address such issues as cost, quality, and access.

## HealthDataViz – Table 4

[www.healthdataviz.com](http://www.healthdataviz.com)

HealthDataViz harnesses the best practices of data visualization to design and build dashboards, reports, and infographics exclusively for health and healthcare organizations. Expert in the science of how people see and understand data, we create visualizations that are clear and compelling using many software tools including Tableau®, Microsoft Power BI, SAS® Visual Analytics, and Qlik®.

Our customized training programs offer one-of-a-kind training to bring staff up to speed on these and other core competencies:

- Tableau for Healthcare [Beginner/Intermediate; Intermediate/Advanced; Web-Authoring]
- Visualizing Health and Healthcare Data
- Design Thinking for Communicating Health Data
- Applied Data Analysis and Statistics for Health Data

## JAMA Network – Table 10

[www.jamahealthforum.com](http://www.jamahealthforum.com)

JAMA Network advances the study of health policy with high-impact journals including JAMA, JAMA Health Forum, and JAMA Network Open. Explore booth # 10 at Health Datapalooza to learn more about JAMA Health Forum, our new open access journal focusing on health policy. Learn more at [jamahealthforum.com](http://jamahealthforum.com).

## MemoryWell – Table 1

[www.memorywell.com](http://www.memorywell.com)

In an increasingly digital world, MemoryWell is solving a growing list of healthcare's most challenging engagement problems with an unexpected solution: Empathetic, human interaction. Our solutions make the person the center of healthcare. MemoryWell delivers dramatic increases in satisfaction and retention. And our rich, person-centered dialogs yield the most accurate SDOH and HRA data available.

## National Pharmaceutical Council – Table 9

[www.npcnow.org](http://www.npcnow.org)

The National Pharmaceutical Council (NPC) is a health policy research organization dedicated to the advancement of good evidence and science and supporting medical innovation. NPC focuses on research development, information dissemination, and education on the critical issues of evidence, innovation and the value of medicines for patients. [www.npcnow.org](http://www.npcnow.org); Twitter @npcnow.

## ResDAC – Table 2

[www.ResDAC.org](http://www.ResDAC.org)

ResDAC, a CMS contractor located at the University of Minnesota, provides free assistance to all researchers (academic, government, non-profit, and for-profit) interested in requesting and using Medicare and/or Medicaid data for research. ResDAC offers resources that outline the strengths, weaknesses, and applications of CMS administrative and claims data and assessments. ResDAC also advises researchers on the CMS data request process. Services include individual consultation by phone or email, online training and resources, and workshops. Contact the ResDAC Support Desk at 1-888-973-7322 or [ResDAC@umn.edu](mailto:ResDAC@umn.edu) with your questions about CMS data files and variables or the data request process or visit [www.ResDAC.org](http://www.ResDAC.org).

## RTI International – Virtual Only

[www.rti.org](http://www.rti.org)

RTI International is an independent, nonprofit research institute dedicated to improving the human condition. Clients rely on us to

answer questions that demand an objective and multidisciplinary approach—one that integrates expertise across the social and laboratory sciences, engineering, and international development. We believe in the promise of science, and we are inspired every day to deliver on that promise for the good of people, communities, and businesses around the world. For more information, visit [www.rti.org](http://www.rti.org).

## Unite Us – Table 16

[www.uniteus.com](http://www.uniteus.com)

Unite Us is a technology company that builds coordinated care networks of health and social service providers. With Unite Us, providers across sectors can send and receive secure electronic referrals, track every person's total health journey, and report on tangible outcomes across a full range of services in a centralized, cohesive, and collaborative ecosystem. Unite Us' dedicated team builds authentic, lasting partnerships with local organizations to ensure their networks have a solid foundation, launch successfully, and continue to grow and thrive. This HITRUST certified social care infrastructure helps communities transform their ability to work together and measure impact at scale.

## VA Health Services Research Development Service – Virtual Only

[www.hsrd.research.va.gov](http://www.hsrd.research.va.gov)

The VA Health Services Research and Development Service (HSR&D) is an integral part of VA's quest for innovative solutions to today's healthcare challenges. HSR&D supports research that encompasses all aspects of VA healthcare, focusing on patient care, cost, and quality. The main mission of HSR&D research is to identify, evaluate, and rapidly implement evidence-based strategies that improve the quality and safety of care delivered to Veterans.

## Virta Health – Table 14

[www.virtahealth.com](http://www.virtahealth.com)

Virta reverses type 2 diabetes in a safe and sustainable way—without medication or surgery. Our medical nutritional therapy, in-house providers and health coaches, and remote biomarker monitoring reduce A1c to sub-diabetic levels while eliminating costly diabetes drugs like insulin.

60% of patients reverse their diabetes within 1 year, on average. The other 40% see significant reductions beyond diabetes management outcomes elsewhere.

We are 100% at risk to deliver clinical and financial results for all populations - from truck drivers to desk workers, tribal nations to military vets, police officers to nurses, seniors to young prediabetics

## Westat – Table 15

[www.westat.com](http://www.westat.com)

Westat provides innovative professional services support to clients in addressing challenges to improve outcomes in health, education, social policy, and transportation. We are dedicated to improving lives through research.

## WorkPartners – Table 12

[www.workpartners.com](http://www.workpartners.com)

Workpartners' philosophy is to help optimize your company's benefit engagement rate while reducing your total human capital costs. Our approach is to take an employee-level focus using data-driven insights to deliver personalized tools and solutions to optimize engagement.





**AcademyHealth  
members are at  
the forefront of the  
evolving health  
services research and  
health policy field.**

## **Benefits of Joining AcademyHealth**

- Discounts on registration fees to attend AcademyHealth's premier conferences;
- Leadership opportunities through Interest Groups, councils and committees;
- Connect with the leaders in the field for valuable networking and mentoring opportunities;
- Access to unique professional development offerings and insight on new career opportunities;
- Stay up-to-date on the field – from the newest job openings to the current events in the AcademyHealth daily and weekly updates.



A man and a young boy are shown from the chest up, both wearing white t-shirts. The man, on the left, has dark skin and dreadlocks, and is shaving his face with a blue razor. The boy, on the right, is also shaving his face with a blue razor. Both have white shaving cream applied to their faces. The background is a warm, slightly blurred indoor setting.

**live** for every moment

This is what life is supposed to feel like. When you aren't held back.  
When you have a health partner that doesn't just treat part of you,  
they care for all of you. Offering the best care, for a more full life.



**Atrium Health**

# Open healthcare data



CareSet Journal

**The path ahead needs ideas and approaches that challenge the status quo.** We can uncover new solutions together.

We partner with public and private stakeholders across the health continuum to develop, test, and measure strategies that create better oral health for all. Because good overall health depends on good oral health.

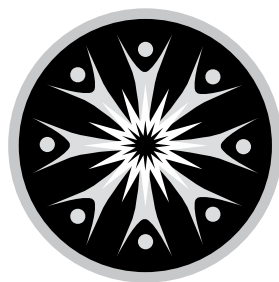
We're on the path to transforming oral health care. We hope you join us.

**Learn more at [carequest.org](https://carequest.org)**

**CareQuest**   
Institute for Oral Health®







# The Commonwealth Fund

*Affordable, quality health care. For everyone.*

[www.commonwealthfund.org](http://www.commonwealthfund.org)

**f** @commonwealthfund

**t** @commonwealthfund

**in** the-commonwealth-fund

**@**advancinghealthequity

**GEORGETOWN UNIVERSITY** | Health Informatics  
Data Science  
Masters Program



## Transforming Healthcare with Data Science

### Cutting edge skills

Health data management

AI/ML for health applications

Precision Medicine Analytics

Medical Imaging informatics

### Program Features

Industry driven

Hands-On Training

Capstone projects

One year accelerated

HIDS is a proud member of the AI/ML Consortium to Advance Health Equity and Researcher Diversity (AIM-AHEAD) Program



Visit us: [tinyURL.com/GUHIDS](http://tinyURL.com/GUHIDS)  
Email: [hids@georgetown.edu](mailto:hids@georgetown.edu)

**Make your career  
move NOW !**



We develop policy solutions to improve health care delivery, lower costs, and reduce disparities in access.

- > Drug pricing
- > Commercial sector prices
- > Complex care
- > Provider payment incentives
- > Medicare sustainability

**arnoldventures.org**

Houston (HQ) | Washington, D.C. | New York City

# GEORGIA HEALTH POLICY CENTER

*Integrating research, policy, and programs to advance health and well-being*



## Sponsor of the 2022 National Health Policy Conference



With expertise in

- Behavioral Health
- Community Health Systems Development
- Health & Health Care Financing
- Health in All Policies
- Health System Transformation
- Long-Term Services & Supports
- Maternal Health & Child Well-Being
- Population & Global Health
- Rural Health

[ghpc.gsu.edu](http://ghpc.gsu.edu)

FOLLOW US ON:





# No matter the challenge, Guidehouse is your trusted advisor.

**“When we went with Guidehouse initially,  
one of our big reasons was their advanced technology.  
Guidehouse delivered on that.”**

*Federal Health System Contracting Officer*

Guidehouse's award-winning technology consulting solutions help providers, government agencies, payers, and life sciences and retail organizations optimize internal processes, empower employees with data-driven intelligence, and create consumer-centric products and services.

Visit **[guidehouse.com/healthcare](https://guidehouse.com/healthcare)**  
for more information on our full suite of solutions



**KLAS**  
RESEARCH

**Modern  
Healthcare**

2021  
BY THE NUMBERS

#3 Guidehouse

Largest Management Consulting Firms

## Talk with us about:

- Advanced Analytics & Intelligent Automation/RPA
- Business Intelligence Solutions
- Cybersecurity
- Digital & Emerging Technology
- Enterprise Performance Management
- Enterprise Resource Planning
- Enterprise Risk Management
- IT Strategy
- Linguistic-based Natural Language Processing
- Open Source Solutions
- Machine Learning
- Ransomware
- Revenue Cycle Management & Outsourcing



**Why Guidehouse?**





## Subscribe to *Health Affairs* at a discounted price!

*Health Affairs*, the leading publication on health policy and health services, is available at a discounted price to AcademyHealth members as an extra benefit of membership.

With a subscription to *Health Affairs*, read:

- » Research and data on health care costs
- » Policy insights
- » Our recent issue on Racism & Health
- » Our upcoming issue on Disabilities & Health
- » Articles on other important topics!

**Contact the AcademyHealth membership department today to get your discounted subscription.**

## Introducing Health Affairs' New Event Series

With our in-person and virtual events, we bring together a diverse audience from the public and private sectors, academia, and the media to share insightful conversations on the latest policy topics affecting health care today.



Policy Spotlight events feature wide-ranging conversations with influential health policy experts in Washington, D.C., and beyond.



Inspired by a century-old tradition, Journal Club events feature authors of an impactful Health Affairs study for an up-close look at research, methods, and findings.



At Lunch And Learn events, midday minisymposia for policy professionals, Health Affairs hosts top researchers and analysts to discuss timely topics and initiatives affecting health policy.



Health Affairs editors and special guests host our Professional Development events—gatherings aimed at early- to midcareer professionals offering “how to” tips for scholarly publishing, peer review, and more.

**Register for our upcoming events today!**





# From the day you're born, we never stop taking care of you.

That's why we're fighting the COVID-19 pandemic and developing a more precise way to find and treat cancer. Why we're restoring heart rhythms, relieving depression, controlling HIV and combating multidrug-resistant tuberculosis.

At Johnson & Johnson, we're not just a baby company. We're creating life-saving medicines, vaccines and medical technologies. And partnering with both public and private sectors to make sure everyone has access to care.

We never stop working to make your life healthier.

*Johnson & Johnson*





## WE'RE IN THIS TOGETHER.

At Kaiser Permanente, we don't see health as an industry. We see it as a cause. And one that we very much believe in. During this extraordinary time we are especially thankful to the heroism of our frontline workers. We would like to express our deepest gratitude to all of our outstanding care teams and individuals who deliver on the Kaiser Permanente mission each day to improve the health of our members and the communities we serve. We are here to help you thrive. **Learn more at [kp.org](https://kp.org).**





# Why We Invent

AT MERCK, WE ARE INVENTING FOR LIFE.

We are taking on many of the world's most challenging diseases because the world still needs cures for cancer, Alzheimer's disease, HIV, and so many other causes of widespread suffering in people and animals.


We invent to help people go on, unburdened, to experience, create and live their best lives.



**MERCK**

INVENTING FOR LIFE





# INNOVATION MATTERS

Innovative medicines  
help patients live longer,  
healthier lives. We need policies  
that foster innovation to advance patient health.

The National Pharmaceutical Council's research informs policy  
development by shedding light on the potential trade-offs and  
unintended consequences for patients. Visit our website to learn more.



[npcnow.org/innovation](https://npcnow.org/innovation)

 [@npcnow](https://twitter.com/npcnow)  
[#InnovationMatters](https://twitter.com/npcnow)

# Making health care simpler and more effective for everyone



**Optum**

Find out more





## Become a Changemaker for Health

The UCSF/UC Hastings Master of Science in Health Policy & Law (HPL) is accepting applications for Fall 2022 enrollment. The HPL program offers a Master of Science degree jointly conferred by UCSF and UC Hastings that provides students with the tools and training needed to effectively address contemporary legal and policy challenges in the health sector.

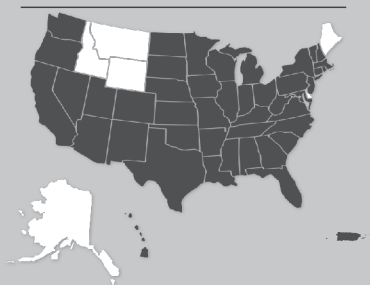
HPL is a 24 semester-unit, online master's program intended for students who wish to obtain transdisciplinary training in the fields of health science, law, and policy. The degree is intended for working professionals with both part and full-time enrollment options. The program was designed by and features leading faculty experts from both UCSF and UC Hastings, bringing the brightest minds in the health and legal fields to the curriculum. The program introduces students to policymaking, legal analysis and research, health economics, health leadership and advocacy and more.

Healthcare is a rapidly evolving field ripe with opportunities, and the HPL program is perfect for individuals who wish to change the American healthcare system for the better. For more information about the program, visit our website [here](#) or email Mallory Warner, Associate Director, at [warnermallory@uchastings.edu](mailto:warnermallory@uchastings.edu).

### AMERICA'S MEDICAL SCHOOLS AND TEACHING HOSPITALS WE ARE THE **FUTURE** OF HEALTH CARE



We **educate and train**  
tomorrow's doctors.



**46**

states, including the District of Columbia and Puerto Rico, have accredited medical schools.

We **pioneer cures** and  
bring them to patients.

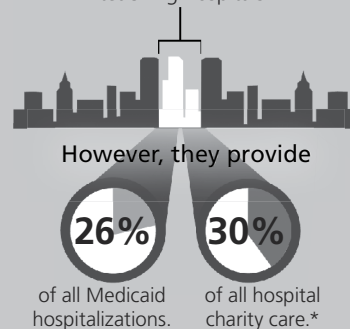


**More than 50%**

of all extramural research funded by the National Institutes of Health is performed by researchers at medical schools and teaching hospitals.

We **provide care** not  
available elsewhere.

**5%** of all U.S. nonfederal, short-term, general hospitals are AAMC member teaching hospitals.



\*Source: AAMC analysis of FY 2020 American Hospital Association data. AAMC membership as of December 2021.

22-067 (03/22)





# COVID-19 changed the game.

People with complex needs have easier access to critical services, supports at home and in community, and more equitable care due to Medicare and Medicaid flexibilities granted under the public health emergency.

Health Management Associates and Manatt Health identified the flexibilities that advance person- and community-centered care. Join us for a discussion on which should become permanent in a post-pandemic era.

[learn more](#)



# VA HSR&D

Advancing  
*evidence*



Building  
*quality*



Improving  
*care*

[www.hsrdr.research.va.gov](http://www.hsrdr.research.va.gov)

**VA**



**U.S. Department  
of Veterans Affairs**

**Veterans Health  
Administration**



# Rutgers Center for State Health Policy



**Rutgers Center for State Health Policy**, an initiative within the Institute for Health, Health Care Policy and Aging Research, was established in 1999 with funding from the Robert Wood Johnson Foundation and a mission to inform, support, and stimulate sound and creative state health policy in New Jersey and around the nation. The Center provides impartial policy analysis, research, training, facilitation, and consultation on important state health policy issues.

**Research Focus** | The Center combines Rutgers University's traditional academic strengths in public health, health services research, and social science with applied research and policy analysis initiatives. The Center's signature areas of research include:

- Population Health and Health Equity
- Access and Coverage
- Health System Performance Improvement
- Health Workforce
- Long-Term Services and Supports

**Examples of Current Work** | The Center's work is supported by grants and contracts from a broad array of federal and state agencies as well as health care philanthropies and private organizations. Our diverse funding portfolio includes:

- The Role of Homelessness and Supportive Housing in Healthcare Disparities Among Adults in Medicaid (**National Institute on Minority Health & Health Disparities - NIMHD**)
- Implementation of the Integrated Population Health Data (iPHD) Project (**New Jersey Department of Health**)
- Facilitation and Staff Support for the NJ Sustainable Health Care Cost Benchmark Initiative (**New Jersey Office of the Governor**)
- Evaluation of the New Jersey FamilyCare Comprehensive Demonstration (**New Jersey Department of Human Services, Division of Medical Assistance and Health Services**)
- The New Jersey Population Health Cohort Study (**Robert Wood Johnson Foundation**)

---

Visit Rutgers Center for State Health Policy and learn more about our current projects, faculty and staff, latest employment opportunities, events, and publications.

## Health Data in Action

At the forefront of national efforts to find data-driven solutions to complex problems facing state policymakers as publicly funded health care systems transition to new models that reward quality and value over volume.

### JOIN OUR TEAM

We are seeking Quantitative Policy Analysts who will apply a suite of analytical methods to multiple sources of health care data to conduct highly sophisticated analytics and health services research to find data-driven solutions to complex problems facing state policymakers as publicly funded health care systems transition to new models that reward quality and value over volume. These new positions are integral to address our expanding portfolio of work and ensure that our analytical capacity can support a growing client base. If you have a keen interest in federal and state health policy, outstanding qualitative and quantitative research skills, and a passion for advancing the health and wellbeing of people and communities, join us! [Learn More/Apply >](#)

The Hilltop Institute is a nonpartisan research organization at the University of Maryland, Baltimore County (UMBC) dedicated to improving the health and wellbeing of people and communities. We conduct cutting-edge data analytics and translational research on behalf of government agencies, foundations, and nonprofit organizations to inform public policy at the national, state, and local levels. We are committed to addressing complex issues through informed, objective, and innovative research and analysis.

[www.hilltopinstitute.org](http://www.hilltopinstitute.org)



# Meet Papa.

**A new kind of care, built on human connection made real.**

Papa helps health plans address loneliness, social isolation, and SDoH—with high-quality, human support from our nationwide network of Papa Pals.



Companionship and help around the house or yard.



Assistance with technology set-up and telehealth.



Transportation to appointments, errands, and grocery deliveries.



SDoH-related gap closure via our social care ecosystem.

**Learn how Papa is improving health outcomes, one personal connection at a time.**

[papa.com](http://papa.com)

# **SYSTEMIC RACISM IS AS REAL AS ANY DISEASE. OUR INDUSTRY IS NOT IMMUNE.**

Diversity is essential to a robust innovation ecosystem that can create new medicines for those who need them. America's biopharmaceutical companies are pushing for necessary, positive and long-term change to better meet the needs of Black and Brown America. That means:

- Open, honest, real conversations about racial equity and what it means to have a culture of inclusion.
- Expanding opportunities to work and succeed in our industry.
- Advancing policy solutions and research to better address health disparities.
- Diversifying our business practices to better invest in Black and Brown America.
- Earning trust and addressing systemic issues that deter Black and Brown communities from participating in clinical trials, so that people who want to participate, can.

Follow our progress at [phrma.org/equity](https://phrma.org/equity)





Primary Care for America

Chronic diseases  
are costing the U.S.  
\$260,000,000,000  
in economic output.

**Primary care could change that.**

See what's possible at [PrimaryCareForAmerica.org](http://PrimaryCareForAmerica.org)





**We connect health  
and social care.**

Learn more at [UniteUs.com](https://UniteUs.com).





# Westat @

## 2022 Health Datapalooza & National Health Policy Conference

Proud to be a **Bronze Sponsor**  
Looking forward to meeting you at our exhibit table!

Westat offers innovative professional services to help clients improve outcomes in health, education, social policy, and transportation. We are dedicated to improving lives through research.

[www.westat.com](http://www.westat.com)



An Employee-Owned Research Corporation®



# Share your hunch.

At the Robert Wood Johnson Foundation, we have a hunch ***your*** hunch can help build a **Culture of Health**. We hope you'll share it with us.

**[shareyourhunch.org](http://shareyourhunch.org)**



Robert Wood Johnson  
Foundation



OUR MISSION

# Restoring Humanity in Healthcare

memorywell™

In an increasingly digital world,  
MemoryWell is solving a growing list of  
healthcare's most challenging engagement  
problems with an unexpected solution:

**EMPATHETIC, HUMAN INTERACTION.**

