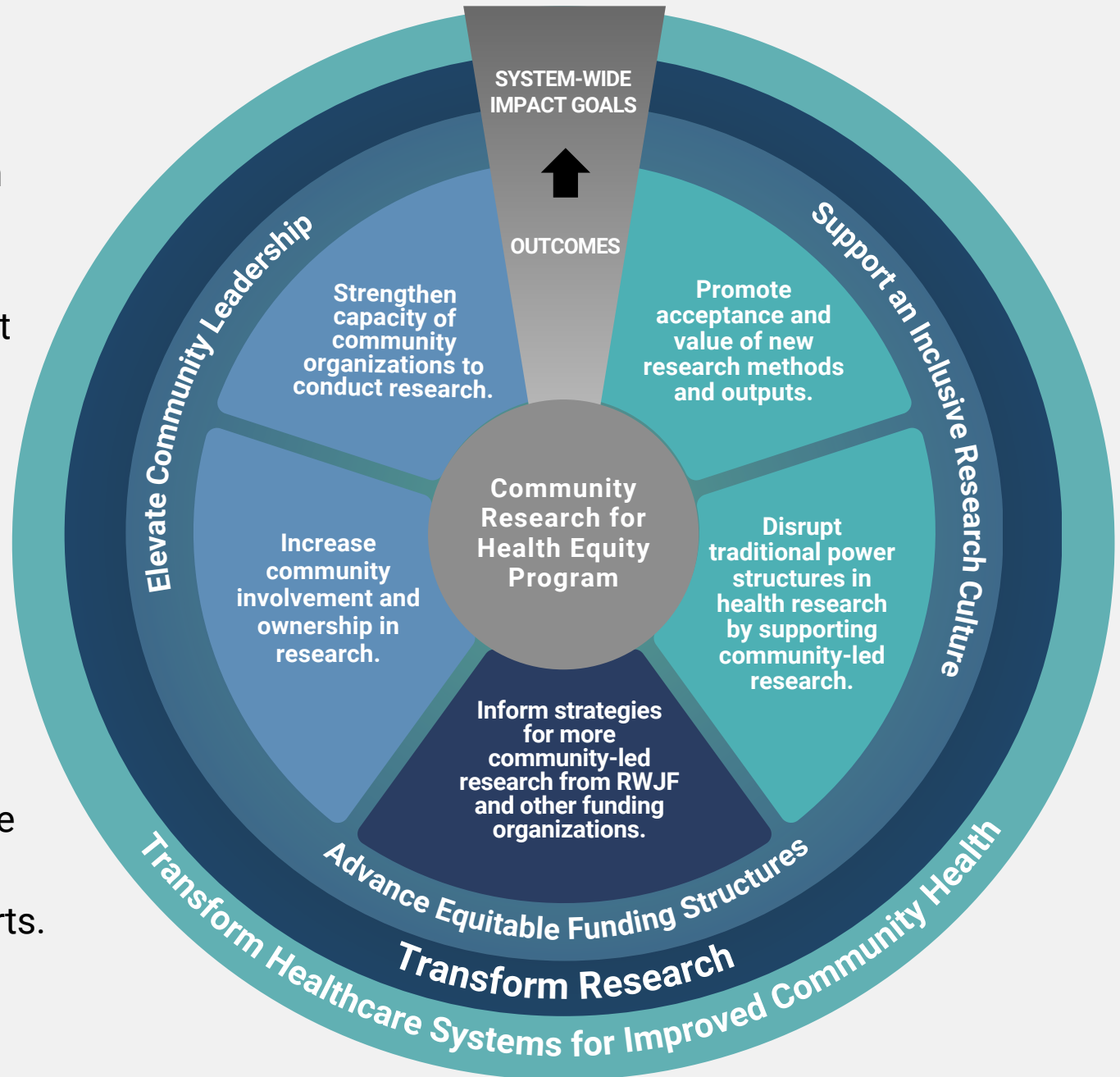


# Community Research for Health Equity Program (CRHE) Theory of Change

The CRHE program is a collaborative effort between AcademyHealth, Design Impact, Change Matrix, and CRHE grantees, with support from the Robert Wood Johnson Foundation.

The aim of the CRHE program is to elevate community voices through community-led research projects that make the priorities of communities the primary goal of local health system transformation efforts.



# Community Research for Health Equity Program (CRHE) Grantees



Cultivating a Community of Care: Amplifying the Voices of Native American Students in Premedicine and Undergraduate Nursing



Illuminating the Shadows: Refugee and Migrant-Led Analysis of Language Inaccessibility in Healthcare as a Product of White Structural and Cultural Dominance



The May 6 Initiative: Community Research for Reproductive Health Equity



When All Are Counted: Closing the Health Surveillance Gap in West Virginia



South Texas Community-Based Research for LGBTQ+ Health Equity



Young Visionaries For Health: Youth Leading Research to Promote Equity in Mental Health Systems of Care in a Rural Community in North Carolina



Examination of the Effect of Implicit Bias and Perceived Discrimination on the Provision of Healthcare among African American women ages 18-44 in Mississippi



Native American Health Survey Among Marginalized Tribal Communities



Access to Healthcare Among Minoritized Muslims in Southeast Michigan: A Systems Approach



White Systems, Black Lives: Exposing Racial and Linguistic Barriers to Independence and Community Living for Disabled BIPOC in Springfield, MA

# Community Research for Health Equity Program (CRHE)

The Community Research for Health Equity (CRHE) program, managed by AcademyHealth, supports community-led research projects that address local health care system issues of importance for communities of color, people with disabilities, LGBTQ+ individuals, and/or other historically marginalized populations. The CRHE Theory of Change (ToC) focuses on the collaborative efforts of CRHE and its grantees to communicate their intended outcomes, goals, and impact. It reflects the collective endeavors of [RWJF](#), [AcademyHealth](#), [Design Impact](#), and [CRHE grantees](#) in supporting community-led research, aiming to reshape research practices and, ultimately, healthcare systems to enhance community health. This process is iterative and will evolve as new insights are gained throughout the program.

## **How was this Theory of Change developed?**

This ToC was developed by [Change Matrix, LLC](#) in partnership with AcademyHealth with guidance from the [Annie E. Casey Foundation's Developing a Theory of Change](#) guide. Program partners and CRHE grantees informed the development and provided valuable thought partnership.

## **What are the underlying assumptions of this Theory of Change?**

This ToC does not aim to comprehensively address all historical systemic harms resulting from research practices. However, it is grounded in several key underlying assumptions to maximize its impact. These assumptions include recognizing the expertise of communities, addressing power dynamics, understanding contextual nuances, prioritizing capacity building, advocating for social justice and equity, and fostering long-term partnerships.